

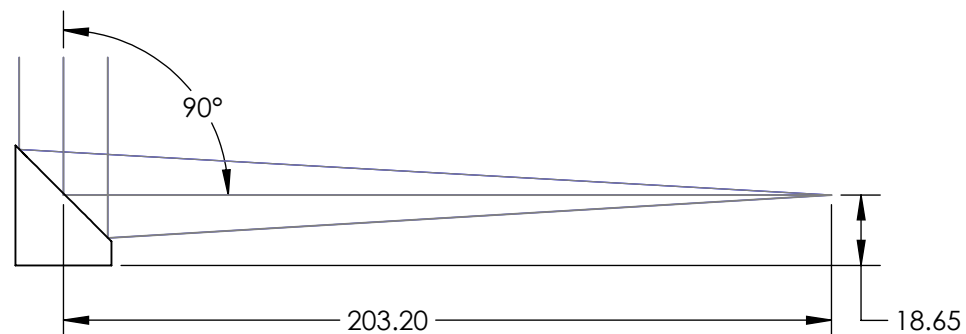
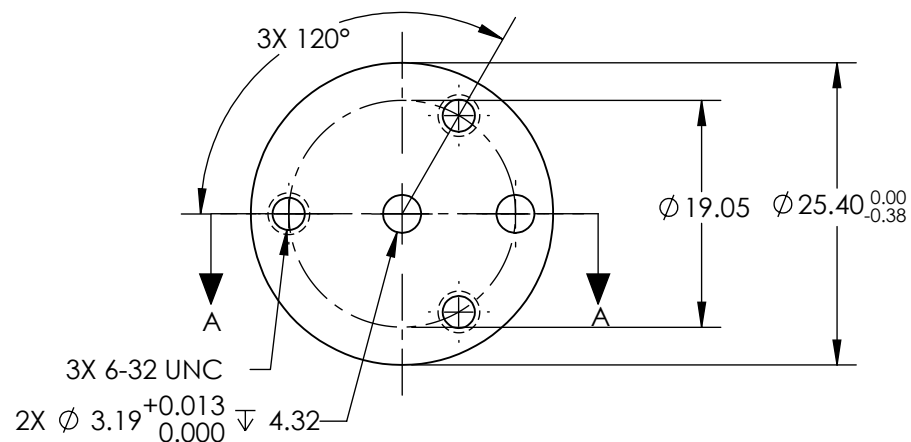
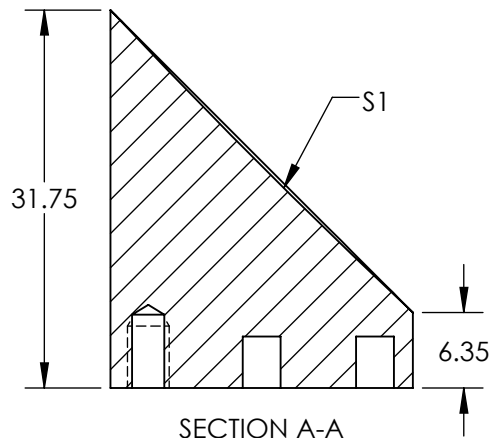
NOTES:

1. SUBSTRATE MATERIAL:  
ALUMINUM
2. FINISH (EXCEPT SURFACE S1):  
BLACK ANODIZED
3. COATING (APPLY ACROSS CLEAR APERTURE)  
S1: SILVER WITH PROTECTIVE OVERCOAT  
R(AVG)  $\geq 98\%$  from 2 - 12 $\mu\text{m}$


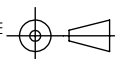
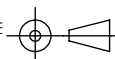
SURFACE ROUGHNESS: <100 Å RMS

4. FOCAL LENGTH TOLERANCE:  $\pm 1\%$
5. ROHS COMPLIANT

**FOR INFORMATION ONLY:  
DO NOT MANUFACTURE  
PARTS TO THIS DRAWING**



SPECIFICATIONS SUBJECT TO CHANGE WITHOUT NOTICE  
DIMENSIONS ARE FOR REFERENCE ONLY

REV. A	S1	EFL	203.20	 Edmund Optics®		
SHAPE	PARABOLIC	PFL	101.60			
REFLECTIVE WAVEFRONT DISTORTION AT 632.8nm (RMS)	$\lambda/2$		TITLE	Ø25.4 X 203.2mm EFL 90° OAP PROTECTED SILVER MIRROR 100Å		
SURFACE FIGURE AT 632.8nm (RMS)	$\lambda/4$					
CLEAR APERTURE	90%		TITLE	Ø25.4 X 203.2mm EFL 90° OAP PROTECTED SILVER MIRROR 100Å		
BEVEL	PROTECTIVE AS NEEDED					
		ALL DIMS IN	mm	DWG NO	36593	SHEET 1 OF 1