

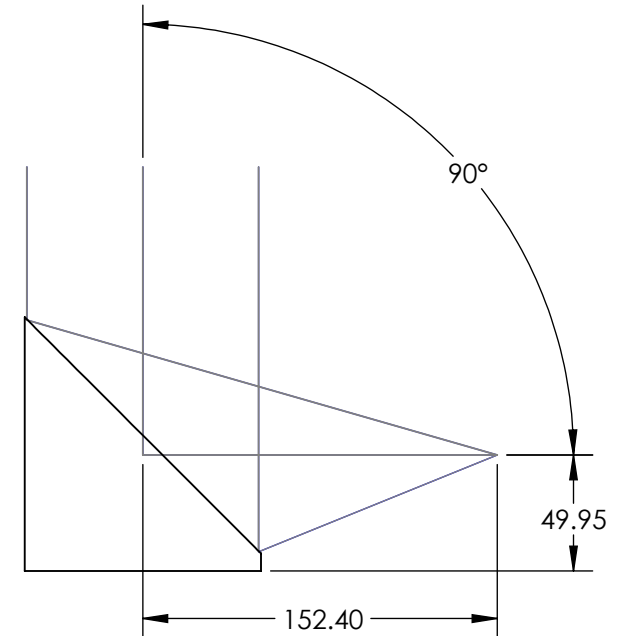
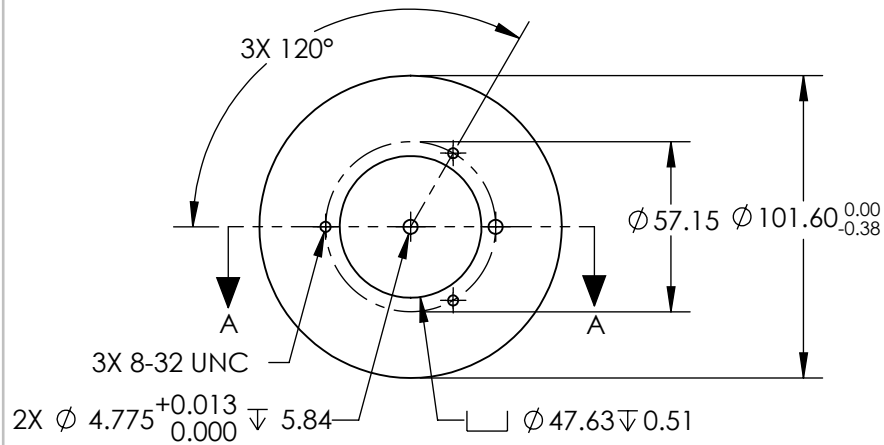
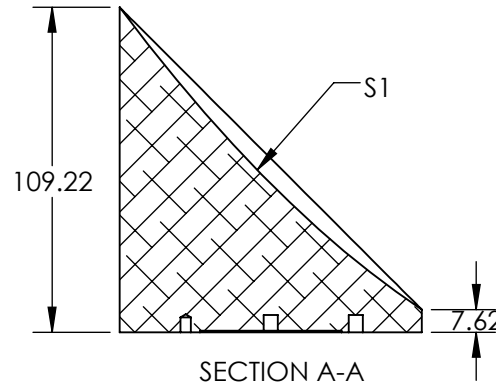
NOTES:

1. SUBSTRATE MATERIAL:
ALUMINUM
2. FINISH (EXCEPT SURFACE S1):
BLACK ANODIZED
3. COATING (APPLY ACROSS CLEAR APERTURE)
S1: SILVER WITH PROTECTIVE OVERCOAT
R(AVG) $\geq 98\%$ from 2 - 12 μ m


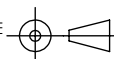
SURFACE ROUGHNESS: <100 Å RMS

4. FOCAL LENGTH TOLERANCE: $\pm 1\%$
5. ROHS COMPLIANT

**FOR INFORMATION ONLY:
DO NOT MANUFACTURE
PARTS TO THIS DRAWING**



SPECIFICATIONS SUBJECT TO CHANGE WITHOUT NOTICE
DIMENSIONS ARE FOR REFERENCE ONLY

REV. A	S1	EFL	152.40	 Edmund Optics®		
SHAPE	PARABOLIC	PFL	76.20			
REFLECTIVE WAVEFRONT DISTORTION AT 632.8nm (RMS)	2λ	<div>THIRD ANGLE PROJECTION</div> 	TITLE	Ø101.6 X 152.4mm EFL 90° OAP PROTECTED SILVER MIRROR 100Å		
SURFACE FIGURE AT 632.8nm (RMS)	1λ					
CLEAR APERTURE	90%	ALL DIMS IN	mm	DWG NO	36602	SHEET 1 OF 1
BEVEL	PROTECTIVE AS NEEDED					