

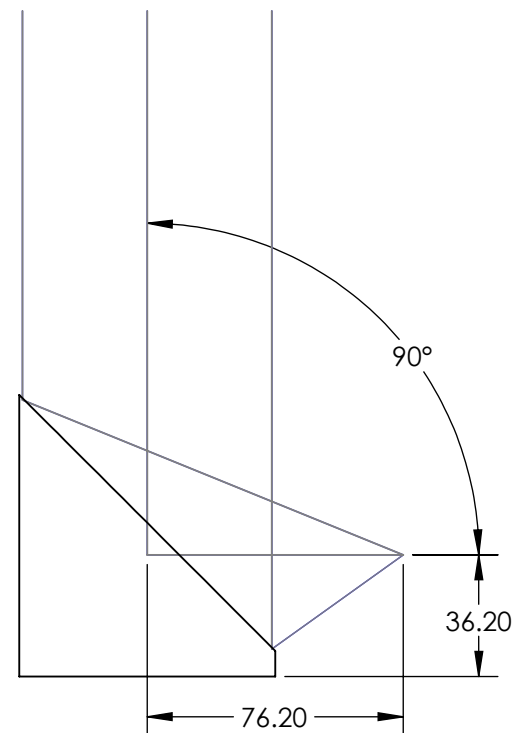
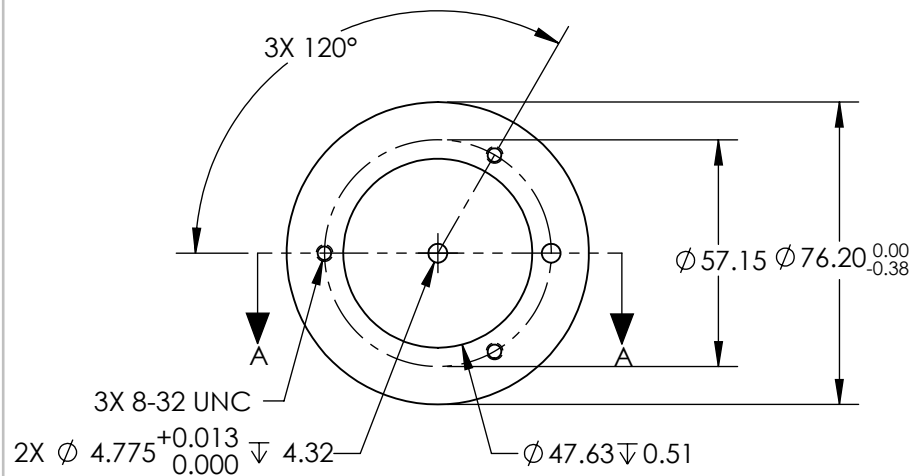
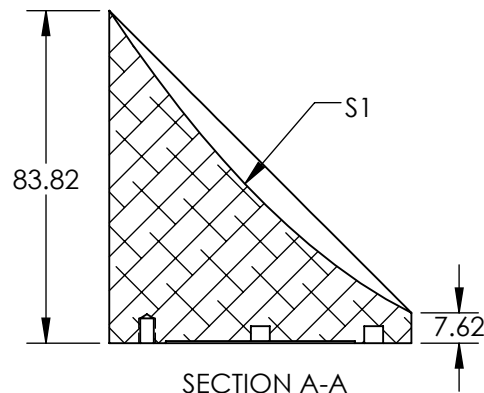
NOTES:

1. SUBSTRATE MATERIAL:
ALUMINUM
2. FINISH (EXCEPT SURFACE S1):
BLACK ANODIZED
3. COATING (APPLY ACROSS CLEAR APERTURE)
S1: SILVER WITH PROTECTIVE OVERCOAT
R(AVG) $\geq 98\%$ from 2 - 12 μ m



SURFACE ROUGHNESS: <100 Å RMS

4. FOCAL LENGTH TOLERANCE: $\pm 1\%$
5. ROHS COMPLIANT

**FOR INFORMATION ONLY:
DO NOT MANUFACTURE
PARTS TO THIS DRAWING**



SPECIFICATIONS SUBJECT TO CHANGE WITHOUT NOTICE
DIMENSIONS ARE FOR REFERENCE ONLY

REV. A	S1	EFL	76.20	 Edmund Optics®		
SHAPE	PARABOLIC	PFL	38.10			
REFLECTIVE WAVEFRONT DISTORTION AT 632.8nm (RMS)	3/2λ	<div>THIRD ANGLE PROJECTION</div> 	TITLE			Ø76.2 X 76.2mm EFL 90° OAP PROTECTED SILVER MIRROR 100Å
SURFACE FIGURE AT 632.8nm (RMS)	3/4λ					
CLEAR APERTURE	90%		DWG NO			36601
BEVEL	PROTECTIVE AS NEEDED	ALL DIMS IN	mm	SHEET 1 OF 1		