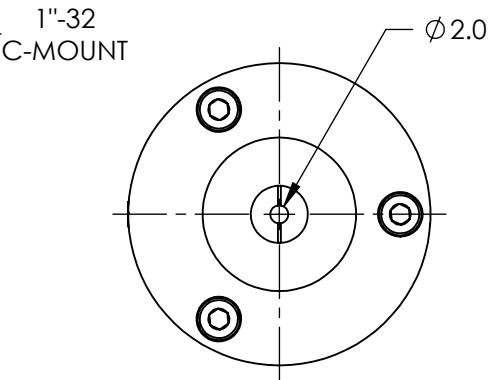
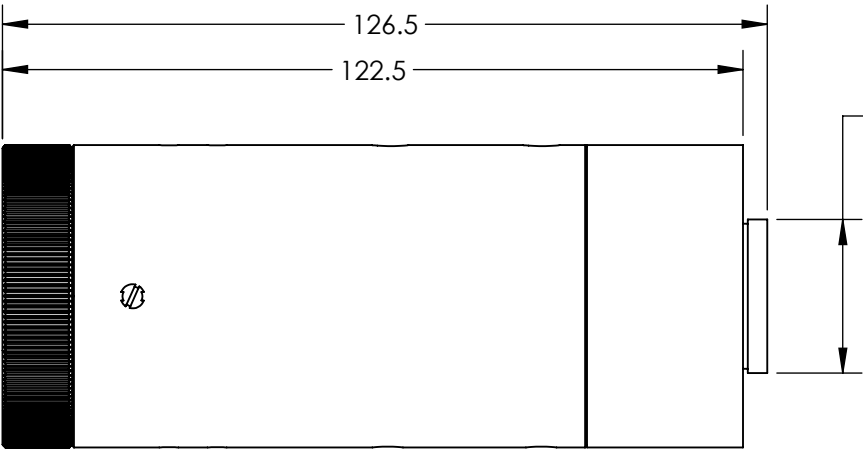
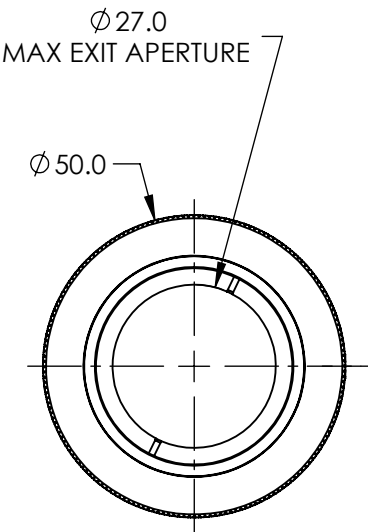
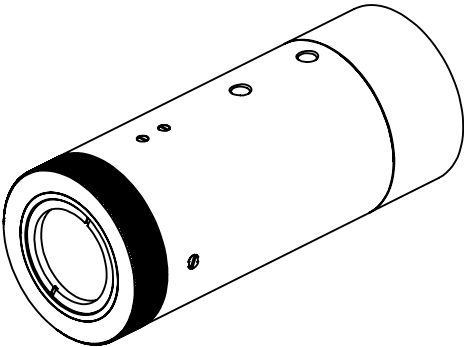


NOTES:

- 1. COATING: BBAR (450-750nm)  
R(ABS) <0.4% @ 630 - 670nm  
R(AVG) <0.6% @ 450 - 750nm
- 2. RoHS COMPLIANT

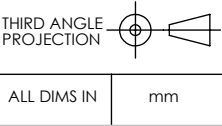


**FOR INFORMATION ONLY:  
DO NOT MANUFACTURE  
PARTS TO THIS DRAWING**

SPECIFICATIONS SUBJECT TO CHANGE WITHOUT NOTICE  
DIMENSIONS ARE FOR REFERENCE ONLY



DESIGN WAVELENGTH DWL (nm)	633
EXPANSION POWER	20X
MOUNT	C-MOUNT
TRANSMITTED WAVEFRONT, P-V	$\lambda/4$



TITLE	20X Arcturus™ HeNe Beam Expander
DWG NO	55579
SHEET	1 OF 1