

NOTES:

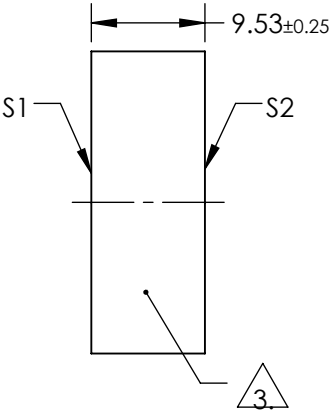
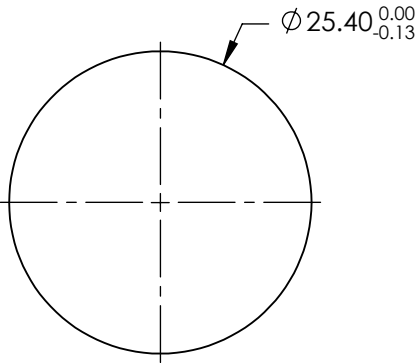
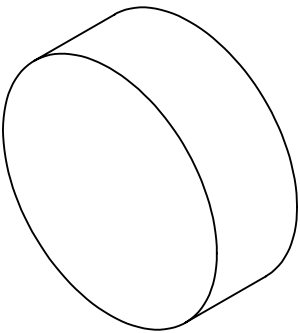
- 1. SUBSTRATE MATERIAL:
FUSED SILICA
- 2. COATING (APPLY ACROSS CLEAR APERTURE)
S1: ULTRAFAST LASER
Ravg≥99.5% REFLECTIVITY AT 780 - 820nm AT 45° AOI

DAMAGE THRESHOLD, PULSED:
0.79 J/cm² @ 800nm, 200fs FWHM, LINEAR POLARIZATION, 1 PULSE (TYPICAL)
0.7 J/cm² @ 800nm, 200fs FWHM, 100Hz, LINEAR POLARIZATION, 1000 PULSES (TYPICAL)

S2: NONE


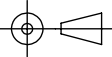
3. FINE GROUND SURFACE

- 4. RoHS: COMPLIANT



**FOR INFORMATION ONLY:
DO NOT MANUFACTURE
PARTS TO THIS DRAWING**

SPECIFICATIONS SUBJECT TO CHANGE WITHOUT NOTICE
DIMENSIONS ARE FOR REFERENCE ONLY

	S1	S2	 Edmund Optics®			
SHAPE	PLANO	PLANO				
SURFACE ACCURACY AT 632.8nm (P-V)	λ/6	N/A				
SURFACE QUALITY	10 - 5	COMMERCIAL POLISH				
CLEAR APERTURE	Ø21.59	N/A				
BEVEL	PROTECTIVE AS NEEDED	PROTECTIVE AS NEEDED				
			ALL DIMS IN	mm	TITLE	800nm DWL 25.4mm DIA. ULTRAFAST HIGH ENERGY MIRROR 45°
			DWG NO			36409
						SHEET 1 OF 1