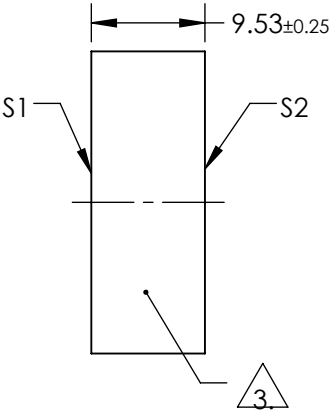
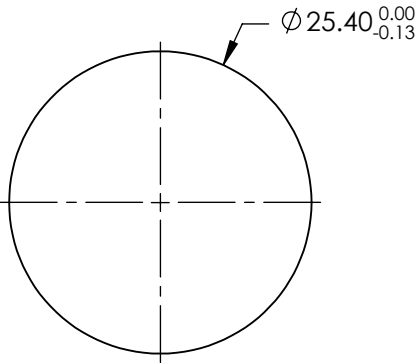
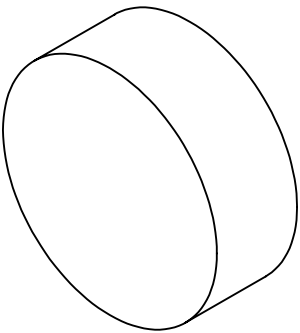


NOTES:

1. SUBSTRATE MATERIAL:
FUSED SILICA
2. COATING (APPLY ACROSS CLEAR APERTURE)
S1: ULTRAFAST LASER
Ravg≥99.5% REFLECTIVITY AT 750 - 850nm AT 0° AOI
S2: NONE
3. FINE GROUND SURFACE
4. RoHS: COMPLIANT



FOR INFORMATION ONLY:
DO NOT MANUFACTURE
PARTS TO THIS DRAWING

SPECIFICATIONS SUBJECT TO CHANGE WITHOUT NOTICE
DIMENSIONS ARE FOR REFERENCE ONLY

	S1	S2	<div><div><div><div></div></div></div><div>Edmund Optics®</div></div>			
SHAPE	PLANO	PLANO				
SURFACE ACCURACY AT 632.8nm (P-V)	λ/6	N/A	<div>THIRD ANGLE PROJECTION</div> <div></div>	TITLE	800nm, 25.4mm Dia. x 9.52mm Thickness, 0° Ultrafast Broadband Mirror	
SURFACE QUALITY	10 - 5	COMMERCIAL POLISH				
CLEAR APERTURE	Ø21.59	N/A				
BEVEL	PROTECTIVE AS NEEDED	PROTECTIVE AS NEEDED				
			ALL DIMS IN	mm	DWG NO	36405
					SHEET 1 OF 1	