

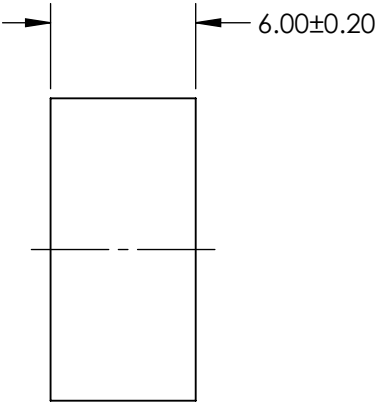
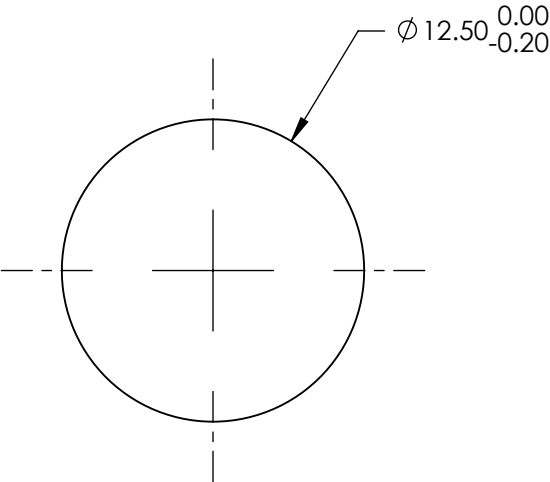
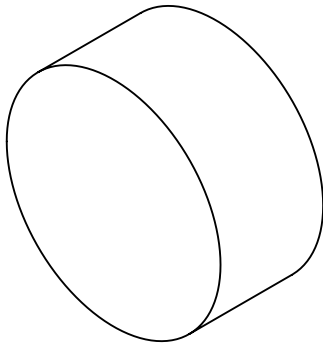
NOTES:

- 1. SUBSTRATE: Fused Silica
- 2. SURFACE S2 TO BE PARALLEL WITH SURFACE S1 TO WITHIN <3 arcmin
- 3. COATING SPECIFICATION APPLY ACROSS COATING APERTURE
S1: R(abs) >97% @ 193nm
S2: NONE

4. FINE GRIND SURFACE

- 5. POWER, IRREGULARITY, AND SURFACE QUALITY SPECIFICATIONS
APPLY ACROSS CLEAR APERTURE
- 6. ROHS COMPLIANT

FOR INFORMATION ONLY:
DO NOT MANUFACTURE
PARTS TO THIS DRAWING



SPECIFICATIONS SUBJECT TO CHANGE WITHOUT NOTICE
DIMENSIONS ARE FOR REFERENCE ONLY

| | S1 | S2 |
|------------------|----------------------|----------------------|
| SHAPE | PLANO | PLANO |
| SURFACE QUALITY | 10-5 | N/A |
| SURFACE FLATNESS | $\lambda/10$ | N/A |
| BEVEL | PROTECTIVE AS NEEDED | PROTECTIVE AS NEEDED |

| | | | |
|------------------------|--|----------------|---------------------------------------------|
| THIRD ANGLE PROJECTION | | Edmund Optics® | |
| ALL DIMS IN | | TITLE | 12.5mm 193nm 45°, EXCIMER Laser Line Mirror |
| mm | | DWG NO | 47982 |
| | | | SHEET 1 OF 1 |