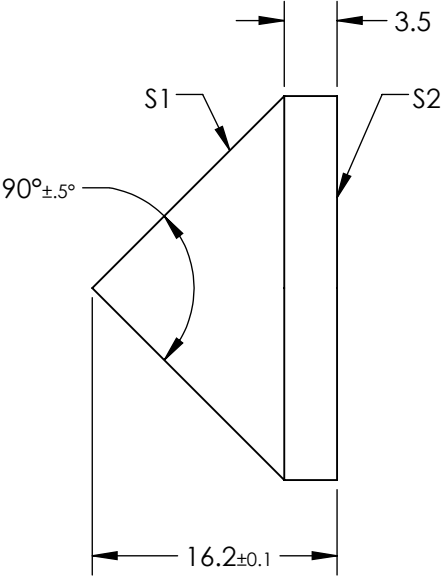
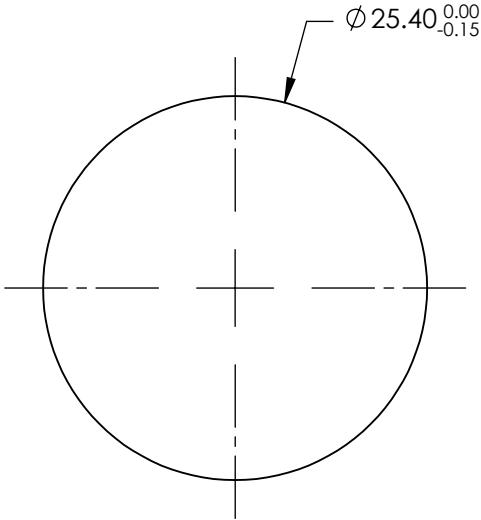


NOTES:

- 1. SUBSTRATE MATERIAL:
FUSED SILICA
- 2. COATING (APPLY ACROSS CLEAR APERTURE)

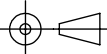

S1 & S2: NONE
- 3. RoHS COMPLIANT



FOR INFORMATION ONLY:
DO NOT MANUFACTURE
PARTS TO THIS DRAWING

SPECIFICATIONS SUBJECT TO CHANGE WITHOUT NOTICE
DIMENSIONS ARE FOR REFERENCE ONLY

	S1	S2
SHAPE	CONICAL	PLANO
SURFACE ACCURACY	$\lambda/4$	$\lambda/4$
SURFACE QUALITY	40-20	40-20
CLEAR APERTURE	>90%	>90%
BEVEL	PROTECTIVE AS NEEDED	PROTECTIVE AS NEEDED

THIRD ANGLE PROJECTION 		 Edmund Optics®	
TITLE		90° APEX ANGLE, 25.4MM DIA, UNCOATED AXICON	
ALL DIMS IN	mm	DWG NO	83779
			SHEET 1 OF 1