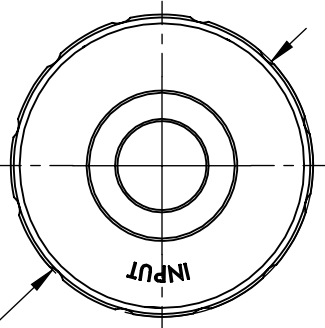
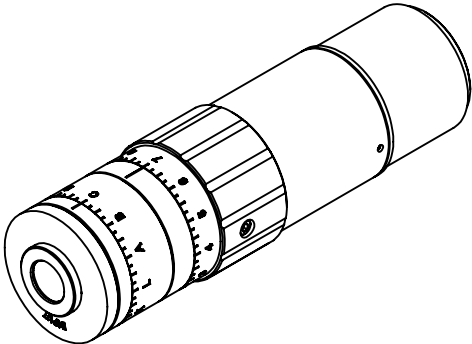
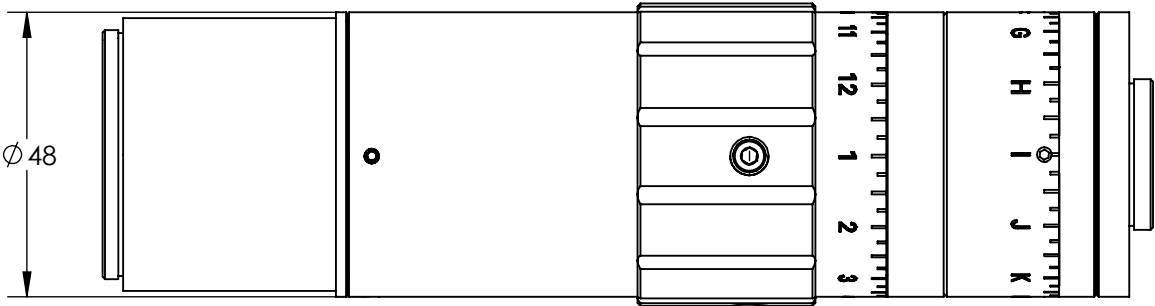
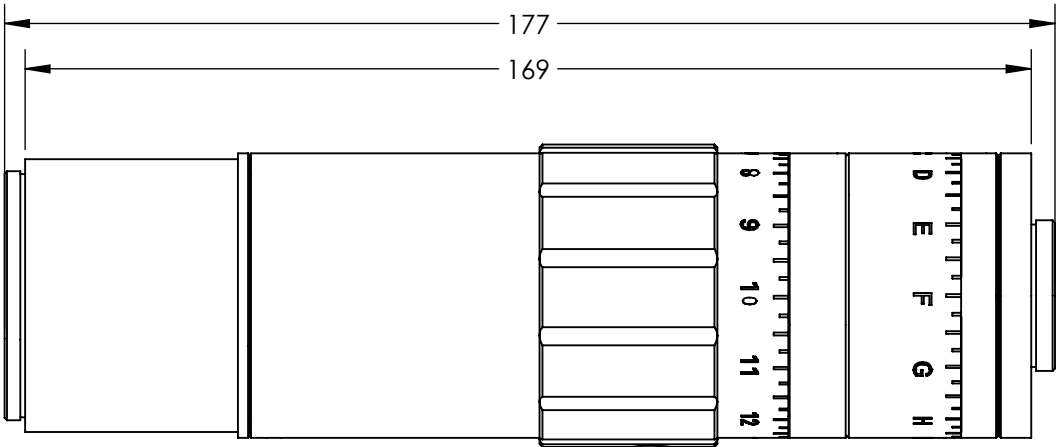


NOTES:

- 1. COATING (APPLY ACROSS CLEAR APERTURE)
VIS LASER
R(AVG) < 1% @ 750 - 1100 nm
- 2. RoHS COMPLIANT



Ø51

**FOR INFORMATION ONLY:
DO NOT MANUFACTURE
PARTS TO THIS DRAWING**

SPECIFICATIONS SUBJECT TO CHANGE WITHOUT NOTICE
DIMENSIONS ARE FOR REFERENCE ONLY

Edmund Optics®

DESIGN WAVELENGTH DWL (nm)	785	THIRD ANGLE PROJECTION		TITLE	BROADBAND NIR 2X - 8X VARIABLE BEAM EXPANDER	
TRANSMISSION	>95% @ DWL			DWG NO	87570	SHEET 1 OF 1
TRANSMITTED WAVEFRONT, P-V	<λ/5 @ 785nm FOR INPUT BEAM ≤4MM (2X TO 6X) <λ/5 @ 785nm FOR INPUT BEAM ≤2MM (>6X)			ALL DIMS IN	mm	