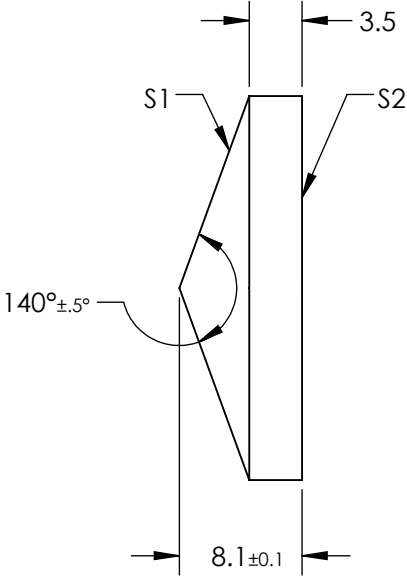
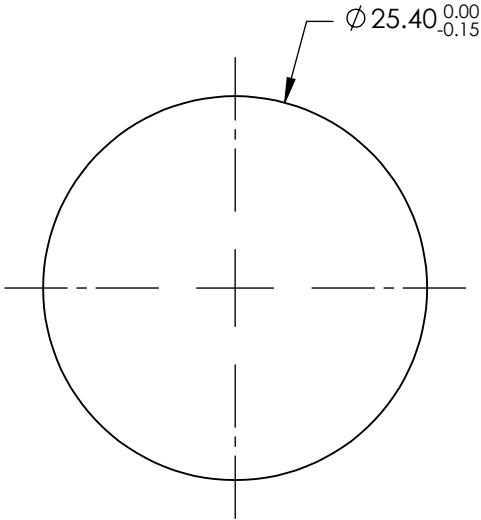


NOTES:

- 1. SUBSTRATE MATERIAL:
FUSED SILICA
- 2. COATING (APPLY ACROSS CLEAR APERTURE)

S1 & S2: NONE
- 3. RoHS COMPLIANT



FOR INFORMATION ONLY:
DO NOT MANUFACTURE
PARTS TO THIS DRAWING

SPECIFICATIONS SUBJECT TO CHANGE WITHOUT NOTICE
DIMENSIONS ARE FOR REFERENCE ONLY

| | | |
|------------------|----------------------|----------------------|
| | S1 | S2 |
| SHAPE | CONICAL | PLANO |
| SURFACE ACCURACY | $\lambda/4$ | $\lambda/4$ |
| SURFACE QUALITY | 40-20 | 40-20 |
| CLEAR APERTURE | >90% | >90% |
| BEVEL | PROTECTIVE AS NEEDED | PROTECTIVE AS NEEDED |

THIRD ANGLE
PROJECTION

ALL DIMS IN

mm

Edmund Optics®

TITLE

140° APEX ANGLE, 25.4MM DIA, UNCOATED
AXICON

DWG NO

83781

SHEET
1 OF 1