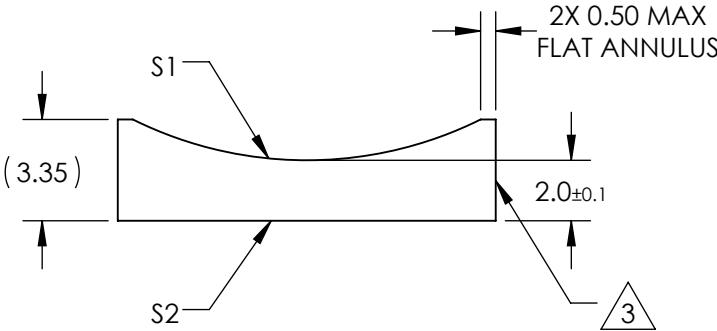
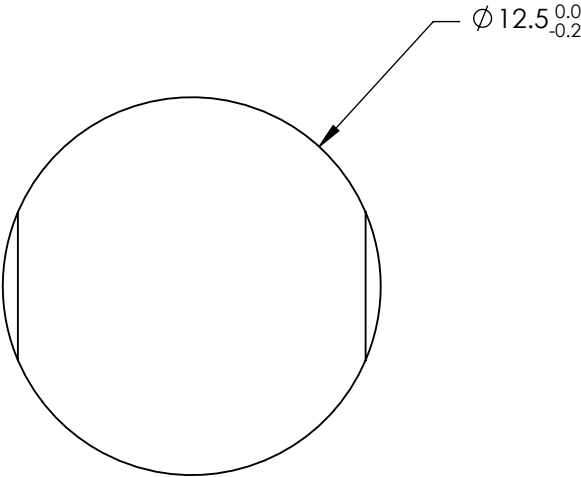


NOTES:

1. SUBSTRATE MATERIAL:  
N-BK7
2. COATING (APPLY ACROSS CLEAR APERTURE)  
  
S1 & S2: NIR I  
  
R(avg)  $\leq 0.5\%$  @ 600 - 1050nm


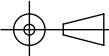
3. FINE GROUND SURFACE

4. POWER, IRREGULARITY, AND SURFACE QUALITY  
SPECIFICAIONS APPLY ACROSS CLEAR APERTURE
5. RoHS COMPLIANT



**FOR INFORMATION ONLY:  
DO NOT MANUFACTURE  
PARTS TO THIS DRAWING**

SPECIFICATIONS SUBJECT TO CHANGE WITHOUT NOTICE  
DIMENSIONS ARE FOR REFERENCE ONLY

REV. A	S1	S2	 Edmund Optics®				
SHAPE	CONVEX	PLANO					
RADIUS	-12.92	∞	EFL	-25	BFL	-26.32	
SURFACE QUALITY	60-40	60-40			TITLE	12.5mm DIA X -25mm FL NIR I COATED, CYLINDER LENS	
CLEAR APERTURE	Ø11.50	Ø11.50					
COATING APERTURE	Ø11.50	Ø11.50					
BEVEL	PROTECTED AS NEEDED	PROTECTED AS NEEDED	ALL DIMS IN	mm	DWG NO	69814	SHEET 1 OF 1