

NOTES:

1. SUBSTRATE MATERIAL:
N-SF11
2. COATING (APPLY ACROSS CLEAR APERTURE)

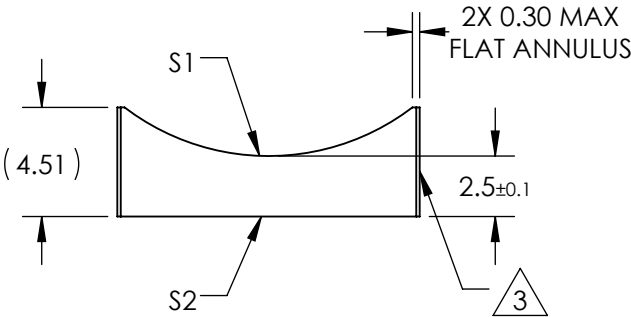
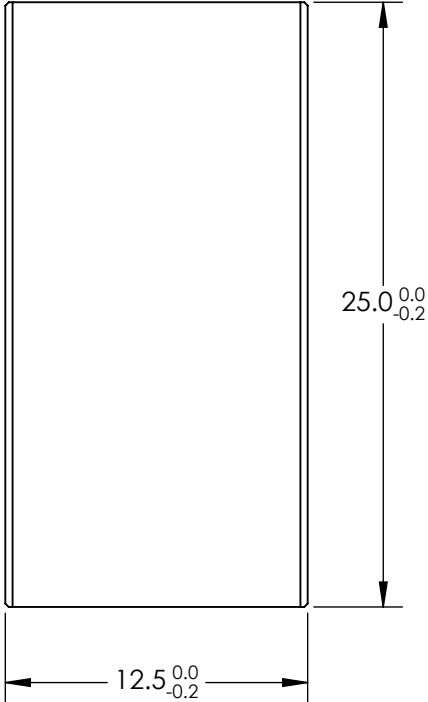
S1 & S2: MgF2

R(avg) $\leq 1.75\%$ @ 400 - 700nm


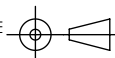
3. FINE GROUND SURFACE

4. POWER, IRREGULARITY, AND SURFACE QUALITY
SPECIFICAIONS APPLY ACROSS CLEAR APERTURE
5. RoHS COMPLIANT

**FOR INFORMATION ONLY:
DO NOT MANUFACTURE
PARTS TO THIS DRAWING**



SPECIFICATIONS SUBJECT TO CHANGE WITHOUT NOTICE
DIMENSIONS ARE FOR REFERENCE ONLY

REV. A	S1	S2	<div><div>EFL</div><div>-12.5</div></div> <div><div>BFL</div><div>-13.9</div></div> <div><div> Edmund Optics®</div></div>				
SHAPE	CONVEX	PLANO					
RADIUS	-9.81	∞					
SURFACE QUALITY	60-40	60-40	<div><div>THIRD ANGLE PROJECTION</div><div></div><div>TITLE</div><div>12.5mm H X 25mm L X -12.5mm FL MgF2 COATED, CYLINDER LENS</div></div>				
CLEAR APERTURE	11.50 X 24.00	11.50 X 24.00					
COATING APERTURE	11.50 X 24.00	11.50 X 24.00	<div><div>ALL DIMS IN</div><div>mm</div><div>DWG NO</div><div>68069</div><div>SHEET 1 OF 1</div></div>				
BEVEL	PROTECTED AS NEEDED	PROTECTED AS NEEDED					