

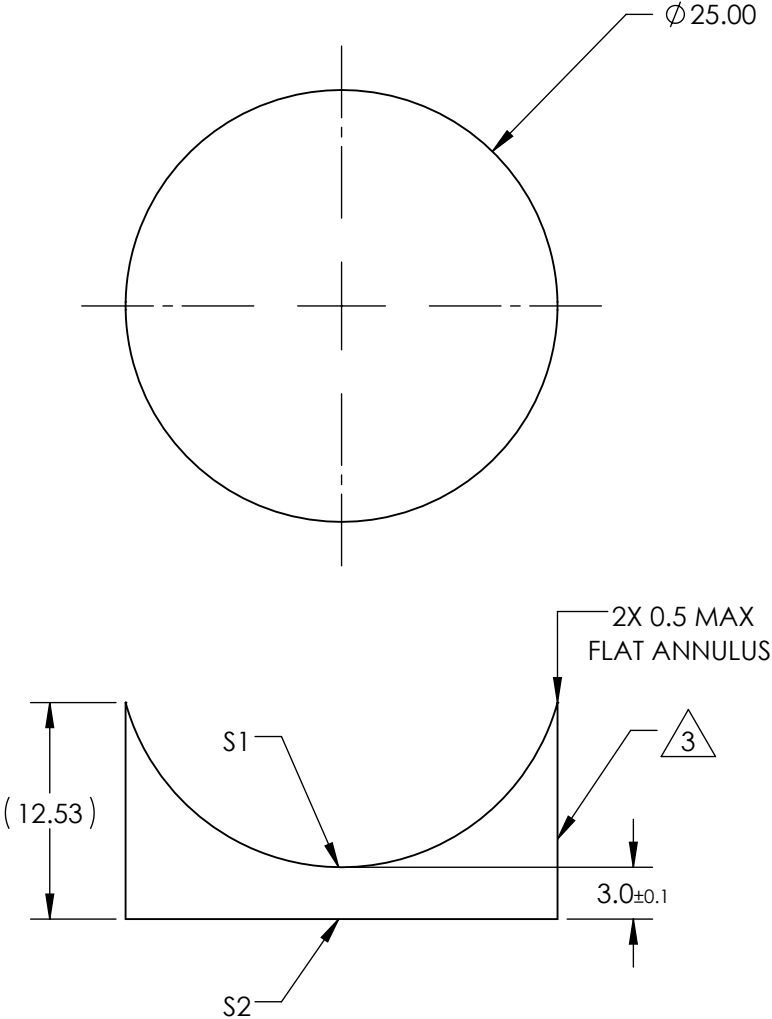
NOTES:

1. SUBSTRATE MATERIAL:
N-BK7
2. COATING (APPLY ACROSS CLEAR APERTURE)


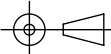
S1 & S2: MgF2

R(avg) $\leq 1.75\%$ @ 400 - 700nm
3. FINE GROUND SURFACE
4. POWER, IRREGULARITY, AND SURFACE QUALITY
SPECIFICAIONS APPLY ACROSS CLEAR APERTURE
5. RoHS COMPLIANT

**FOR INFORMATION ONLY:
DO NOT MANUFACTURE
PARTS TO THIS DRAWING**



SPECIFICATIONS SUBJECT TO CHANGE WITHOUT NOTICE
DIMENSIONS ARE FOR REFERENCE ONLY

REV. A	S1	S2	<div><div>EFL</div><div>-25</div></div> <div><div>BFL</div><div>-26.97</div></div> <div><div> Edmund Optics®</div></div>					
SHAPE	CONVEX	PLANO						
RADIUS	-12.96	∞						
SURFACE QUALITY	60-40	60-40	<div><div>THIRD ANGLE PROJECTION</div><div></div></div>		TITLE	25mm DIA X -25mm FL MgF2 COATED, CYLINDER LENS		
CLEAR APERTURE	Ø24.00	Ø24.00						
COATING APERTURE	Ø24.00	Ø24.00						
BEVEL	PROTECTED AS NEEDED	PROTECTED AS NEEDED	ALL DIMS IN	mm	DWG NO	48379	SHEET 1 OF 1	