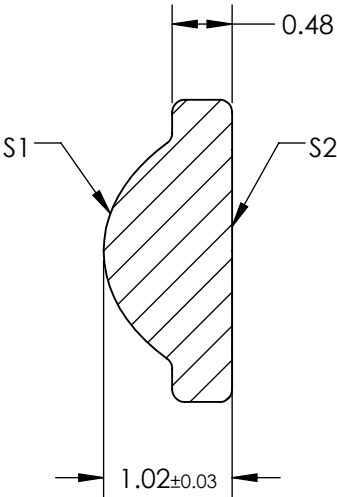
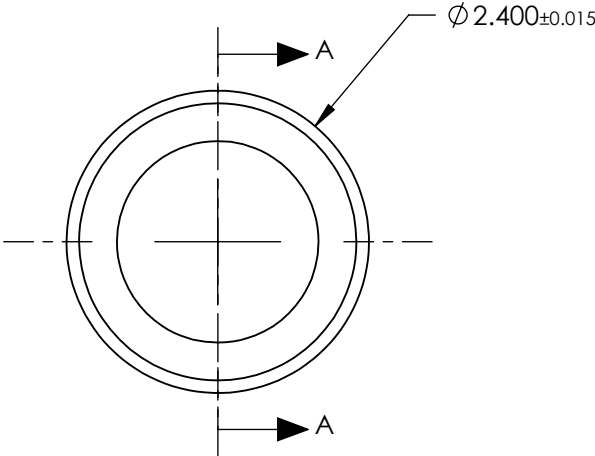


NOTES:

- 1. SUBSTRATE:  
D-ZK3
- 2. NUMERICAL APERTURE: 0.58
- 3. COATING  
S1 & S2: R(ABS) < 1.0% @ 1050 - 1600nm
- 4. FOCAL LENGTH TOLERANCE: ±1%
- 5. TRANSMITTED WAVEFRONT ERROR (λ, RMS): < 0.070


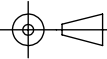


SECTION A-A

**FOR INFORMATION ONLY:**  
**DO NOT MANUFACTURE**  
**PARTS TO THIS DRAWING**

SPECIFICATIONS SUBJECT TO CHANGE WITHOUT NOTICE DIMENSIONS ARE FOR REFERENCE ONLY

	S1	S2
SHAPE	CONVEX	PLANO
SURFACE QUALITY	40-20	40-20
CLEAR APERTURE	Ø1.60	Ø1.60
BEVEL MAX	PROTECTIVE AS NEEDED	PROTECTIVE AS NEEDED

EFL	1.45	 <b>Edmund Optics®</b>		
BFL	0.81			
THIRD ANGLE PROJECTION 	TITLE	0.58 NA 1.45mm FL 1050-1600nm AR COATED, MOLDED ASPHERIC LENS		
ALL DIMS IN mm	DWG NO	83615	SHEET 1 OF 1	