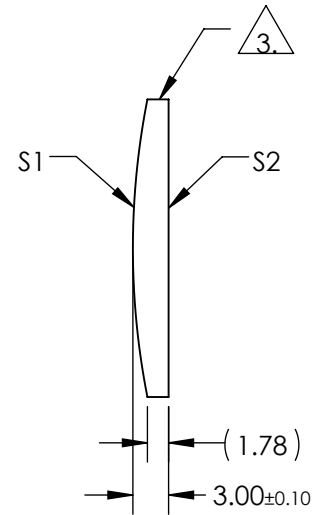
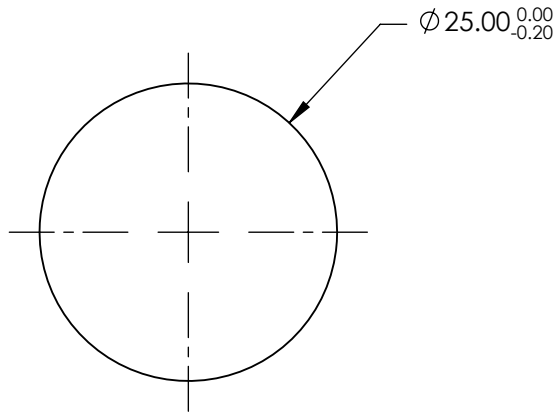


NOTES:

1. SUBSTRATE MATERIAL:
N-BK7
2. COATING (APPLY ACROSS CLEAR APERTURE)
- S1 & S2: NIR I (600-1050nm)
R(AVG) ≤0.5% @ 600 - 1050nm
3. FINE GROUND SURFACE
4. RoHS COMPLIANT



**FOR INFORMATION ONLY:
DO NOT MANUFACTURE
PARTS TO THIS DRAWING**

SPECIFICATIONS SUBJECT TO CHANGE WITHOUT NOTICE
DIMENSIONS ARE FOR REFERENCE ONLY

	S1	S2	EFL	125.00	 Edmund Optics®	
SHAPE	CONVEX	PLANO	BFL	123.02		
RADIUS	64.60	INFINITY			TITLE	25mm DIA X 125mm FL NIR I COATED, CYLINDER LENS
SURFACE QUALITY	60-40	60-40				
CLEAR APERTURE	Ø24.00	Ø24.00			DWG NO	69756
BEVEL	PROTECTIVE AS NEEDED	PROTECTIVE AS NEEDED				
			ALL DIMS IN	mm		SHEET 1 OF 1