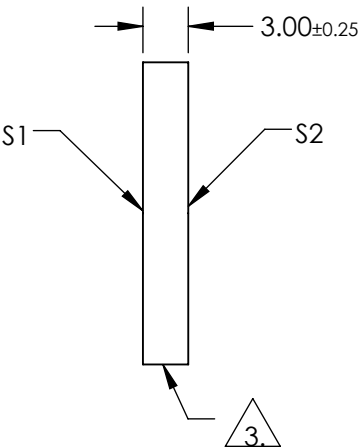
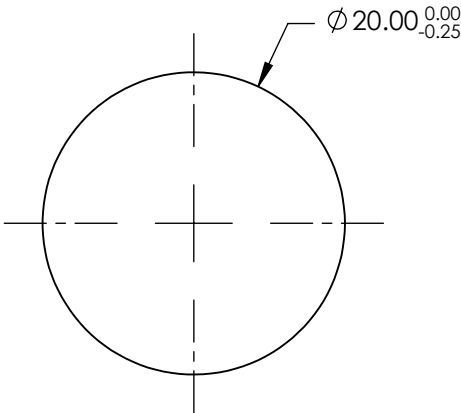
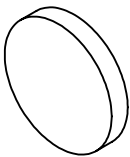



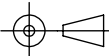
NOTES:

- 1. SUBSTRATE:  
BOROFLOAT®
- 2. COATING SPECIFICATION:  
S1: Enhanced Aluminum (450-650nm)  
R(AVG) >95% @ 450 - 650nm
- 3. FINE GROUND SURFACE
- 4. ROHS COMPLIANT



**FOR INFORMATION ONLY:  
DO NOT MANUFACTURE  
PARTS TO THIS DRAWING**

SPECIFICATIONS SUBJECT TO CHANGE WITHOUT NOTICE  
DIMENSIONS ARE FOR REFERENCE ONLY

	S1	S2			 Edmund Optics®		
SHAPE	PLANO	PLANO	THIRD ANGLE PROJECTION 	TITLE		20mm Dia. Enhanced Aluminum, λ/4 Mirror	
SURFACE QUALITY	60-40	COMMERCIAL POLISH		DWG NO		63163	
CLEAR APERTURE	Ø17.00	N/A				SHEET 1 OF 1	
BEVEL	PROTECTIVE AS NEEDED	PROTECTIVE AS NEEDED	ALL DIMS IN	mm			