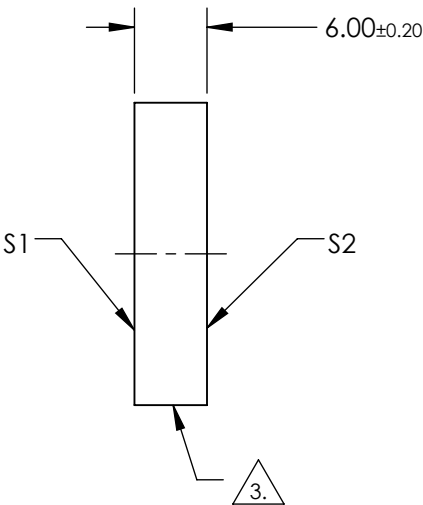
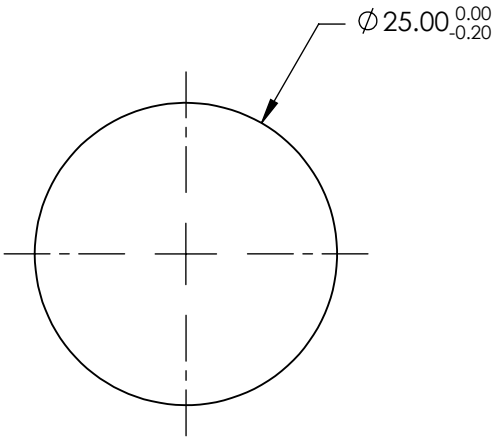
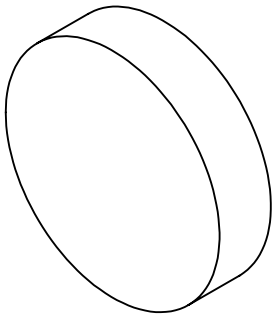


NOTES:

- 1. SUBSTRATE: FUSED SILICA
- 2. COATING SPECIFICATION:
 - S1: R(ABS) >99.8% @ 1550nm @ 45° AOI
 - R(AVG) >98% @ 1440 - 1660nm @ 45° AOI
 - S2: NONE
- 3. FINE GRIND SURFACE
- 4. POWER, IRREGULARITY, AND SURFACE QUALITY SPECIFICATIONS
APPLY ACROSS CLEAR APERTURE
- 5. ROHS COMPLIANT

FOR INFORMATION ONLY:
DO NOT MANUFACTURE
PARTS TO THIS DRAWING



SPECIFICATIONS SUBJECT TO CHANGE WITHOUT NOTICE
DIMENSIONS ARE FOR REFERENCE ONLY

	S1	S2
SHAPE	PLANO	PLANO
SURFACE QUALITY	10-5	FINE GROUND
SURFACE ACCURACY	$\lambda/10$	N/A
CLEAR APERTURE	>90%	N/A
BEVEL	PROTECTIVE AS NEEDED	PROTECTIVE AS NEEDED

THIRD ANGLE
PROJECTION

ALL DIMS INmm

Edmund Optics®

TITLE

25mm Dia 1550nm 45°, Laser Diode Mirror

DWG NO

63157

SHEET

1 OF 1