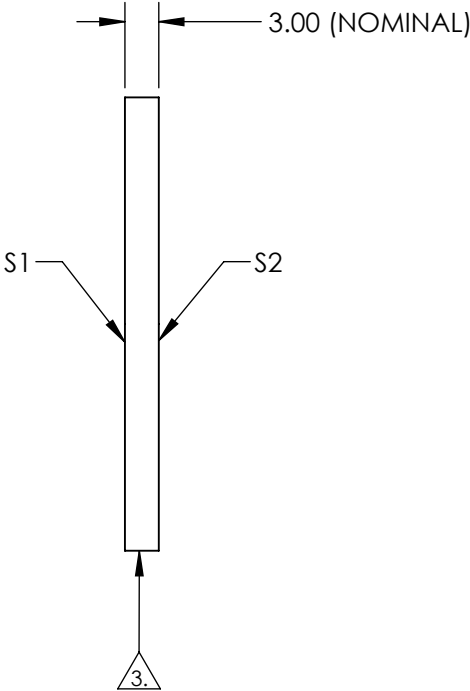
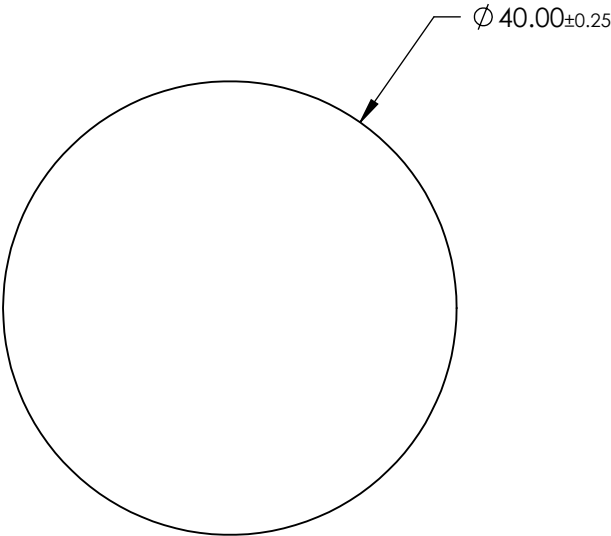


NOTES:

- 1. SUBSTRATE: Float Glass
- 2. COATING (APPLY ACROSS CLEAR APERTURE)
 - S1: Protected Silver (450-10000nm)
 - R(AVG) >98% @ 450 - 800nm
 - R(AVG) >98.5% @ 2000 - 10,000nm
 - S2: NONE
- 3. EDGES GROUND
- 4. RoHS COMPLIANT




**FOR INFORMATION ONLY:
DO NOT MANUFACTURE
PARTS TO THIS DRAWING**

SPECIFICATIONS SUBJECT TO CHANGE WITHOUT NOTICE
DIMENSIONS ARE FOR REFERENCE ONLY

| | S1 | S2 |
|------------------|---------------------|---------------------|
| SHAPE | PLANO | PLANO |
| SURFACE QUALITY | 60-40 | N/A |
| SURFACE FLATNESS | 4 - 6λ | N/A |
| CLEAR APERTURE | Ø 38.00 | N/A |
| BEVEL | PROTECTED AS NEEDED | PROTECTED AS NEEDED |

THIRD ANGLE
PROJECTION

ALL DIMS IN mm

 **Edmund Optics®**

| | | | |
|--------|----------------------------------------|-----------------|--|
| TITLE | 40mm Dia Protected Silver, 4-6λ Mirror | | |
| DWG NO | 36048 | SHEET 1 OF 1 | |