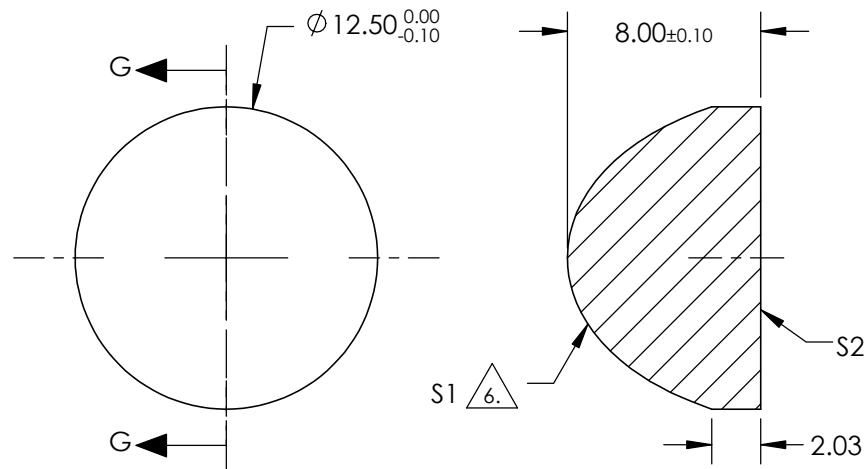


NOTES:

1. SUBSTRATE: FUSED SILICA
2. COATING (APPLY ACROSS CLEAR APERTURE)
S1: NONE
S2: NONE
3. EDGES: FINE GROUND
4. CENTERING: <3-5 ARCMIN
5. ASPHERE FIGURE ERROR: 0.75µm µm RMS

△ ASPHERIC SURFACE DESCRIBED BY (REF. COEFFICIENT TABLE)

$$Z_{ASPH}(Y) = \frac{(\frac{1}{RADIUS}) * Y^2}{1 + \sqrt{1 - (1+k) * (\frac{1}{RADIUS})^2 * Y^2}} + D * Y^2 + E * Y^4 + F * Y^6 + G * Y^8 + H * Y^{10} + J * Y^{12} + L * Y^{14}$$




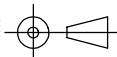
SECTION G-G

COEFFICIENT TABLE △ 7

| COEFFICIENT | S1 |
|-------------|----------------|
| k | -0.6771756 |
| D | 0 |
| E | 0.00021003575 |
| F | 2.3167923e-006 |
| G | 1.222945e-007 |
| H | -2.00016e-009 |
| J | 5.4535311e-011 |
| L | 0 |

**FOR INFORMATION ONLY:
DO NOT MANUFACTURE
PARTS TO THIS DRAWING**

SPECIFICATIONS SUBJECT TO CHANGE WITHOUT NOTICE DIMENSIONS ARE FOR REFERENCE ONLY

| | | | | | | |
|-----------------|----------------------|----------------------|---|------|---|--|
| REV. A | S1 | S2 | EFL @ 587.6nm | 10 |  Edmund Optics® | |
| SHAPE | CONVEX | PLANO | BFL @ 587.6nm | 4.52 | | |
| RADIUS | 4.585 | INFINITY |  | | TITLE | 12.5mm DIA 0.63 NA UNCOATED, UV FUSED SILICA ASPHERIC LENS |
| SURFACE QUALITY | 60-40 | 60-40 | | | | |
| CLEAR APERTURE | 90% | 90% | ALL DIMS IN mm | | DWG NO | 87975 |
| BEVEL MAX | PROTECTIVE AS NEEDED | PROTECTIVE AS NEEDED | | | | SHEET 1 OF 1 |