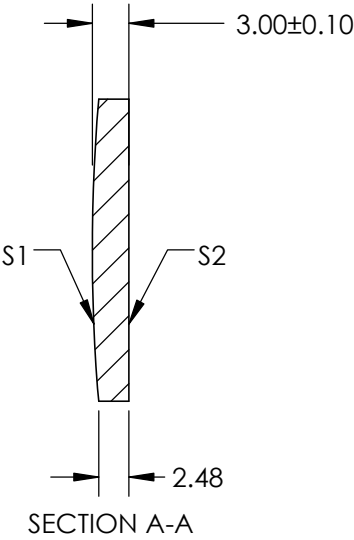
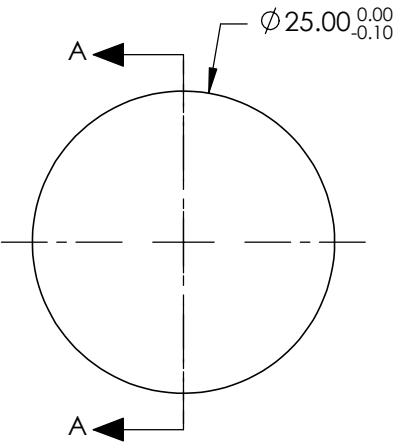

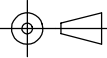


NOTES:

- 1. SUBSTRATE: GERMANIUM (GE)
- 2. COATING (APPLY ACROSS COATING APERTURE)  
S1: R(avg) <3.0% @ 3 - 5µm  
S2: R(avg) <3.0% @ 3 - 5µm
- 3. EDGES DIAMOND TURNED
- 4. CENTERING: <3 ARCMIN
- 5. RoHS COMPLIANT



**FOR INFORMATION ONLY:  
DO NOT MANUFACTURE  
PARTS TO THIS DRAWING**

		S1	S2	SPECIFICATIONS SUBJECT TO CHANGE WITHOUT NOTICE DIMENSIONS ARE FOR REFERENCE ONLY			
SHAPE	CONVEX		PLANO	EFL @ 10.6µm	50	 <b>Edmund Optics®</b>	
RADIUS	150.19		∞	BFL @ 10.6µm	49.25		
SURFACE QUALITY	60-40		60-40			TITLE 25mm DIA. X 50mm FL, 3 - 5µm COATED, GE PLANO-CONVEX LEN	
CLEAR APERTURE	Ø24		Ø24				
BEVEL	PROTECTIVE AS NEEDED		PROTECTIVE AS NEEDED	ALL DIMS IN	mm	DWG NO 69653	SHEET 1 OF 1