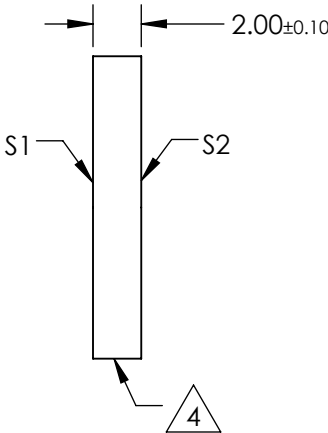
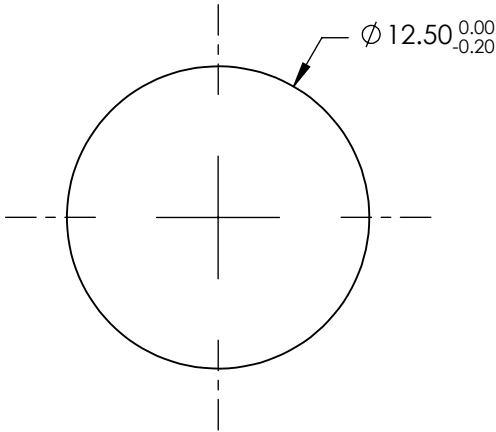
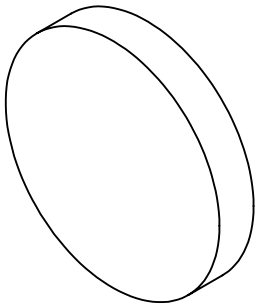


NOTES:

- 1. SUBSTRATE:UV GRADE FUSED SILICA
- 2. COATING (APPLY ACROSS CLEAR APERTURE)
S1 & S2: RABS ≤1.0% @ 350 - 450nm
RAVG ≤1.5% @ 250 - 700nm
- 3. SURFACE S2 TO BE PARALLEL WITH S1 TO <5 ARCSEC


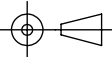
4. FINE GRIND SURFACE

5. RoHS COMPLIANT



**FOR INFORMATION ONLY:
DO NOT MANUFACTURE
PARTS TO THIS DRAWING**

SPECIFICATIONS SUBJECT TO CHANGE WITHOUT NOTICE
DIMENSIONS ARE FOR REFERENCE ONLY

	S1	S2	 Edmund Optics®			
SHAPE	PLANO	PLANO		TITLE	12.5mm DIA., 2mm THICK, UV-VIS COATED λ/10 FUSED SILICA WINDOWS	
SURFACE QUALITY	20-10	20-10		DWG NO	68488	
CLEAR APERTURE	Ø10.00	Ø10.00				
BEVEL	PROTECTIVE AS NEEDED	PROTECTIVE AS NEEDED				
			ALL DIMS IN	mm	SHEET 1 OF 1	