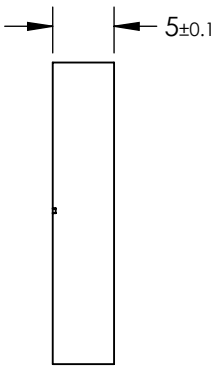
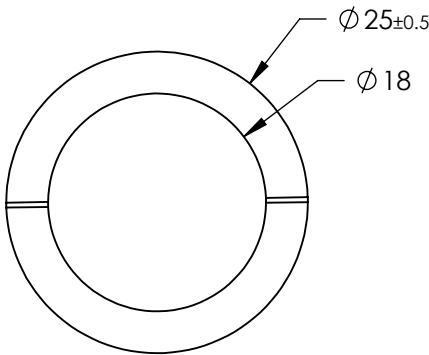
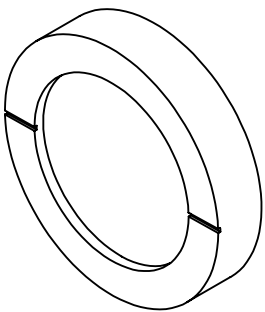

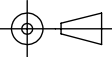


NOTES:
1. SUBSTRATE:
ZINC SELENIDE (ZnSe)



**FOR INFORMATION ONLY:
DO NOT MANUFACTURE
PARTS TO THIS DRAWING**

SPECIFICATIONS SUBJECT TO CHANGE WITHOUT NOTICE
DIMENSIONS ARE FOR REFERENCE ONLY

REV. A		 Edmund Optics®			
DAMAGE THRESHOLD	100 W/cm²		TITLE	Ø25mm, ZnSe, IR RULED WIRE GRID POLARIZERS	
EXTINCTION RATIO	50:1 @ 3µm; 100:1 @ 10µm				
PARALLELISM	≤3 arcmin				
SURFACE FLATNESS	λ/20 @ 10.6µm				
TRANSMISSION	>50% @ 2-19µm		DWG NO	64395	SHEET 1 OF 1
		ALL DIMS IN	mm		