

NOTES:

1. SUBSTRATE: N-BK7

2. COATING

S1: PROTECTED ALUMINUM

R(avg) >85% @ 400 - 700nm

DENSITY LIMIT : 0.3 J/cm² @ 532nm & 1064nm, 10ns

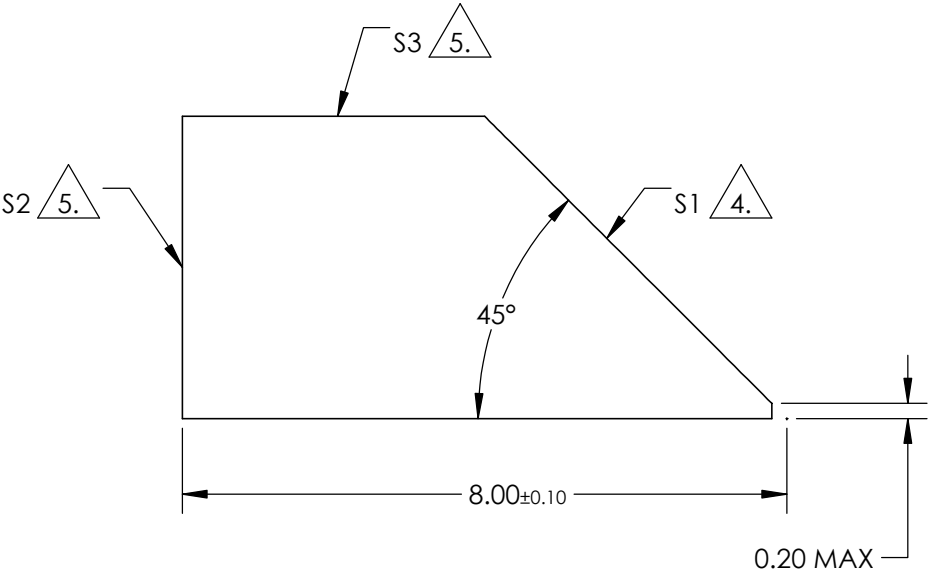
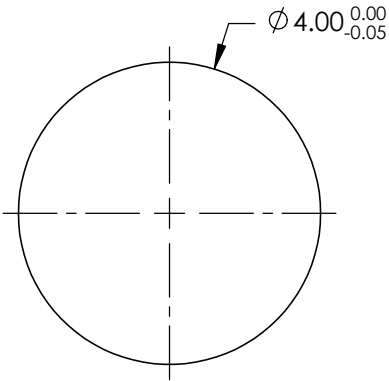
S2: UNCOATED

S3: UNCOATED

3. RoHS COMPLIANT

4. POLISHED SURFACE

5. FINE GRIND SURFACE




**FOR INFORMATION ONLY:
DO NOT MANUFACTURE
PARTS TO THIS DRAWING**

SPECIFICATIONS SUBJECT TO CHANGE WITHOUT NOTICE
DIMENSIONS ARE FOR REFERENCE ONLY

| REV. A | S1 | S2, S3 |
|--------------------------|----------------------|----------------------|
| ANGLE TOLERANCE (arcmin) | ±10 | ±10 |
| WAVELENGTH RANGE (nm) | 400 - 700 | N/A |
| SURFACE QUALITY | 40-20 | N/A |
| BEVEL | PROTECTIVE AS NEEDED | PROTECTIVE AS NEEDED |

THIRD ANGLE PROJECTION

ALL DIMS IN mm

**Edmund Optics®**

| | | | |
|--------|--------------------------------------|--------------|--|
| TITLE | Ø4mm, 45°, ALUMINUM COATED, ROD LENS | | |
| DWG NO | 54096 | SHEET 1 OF 1 | |