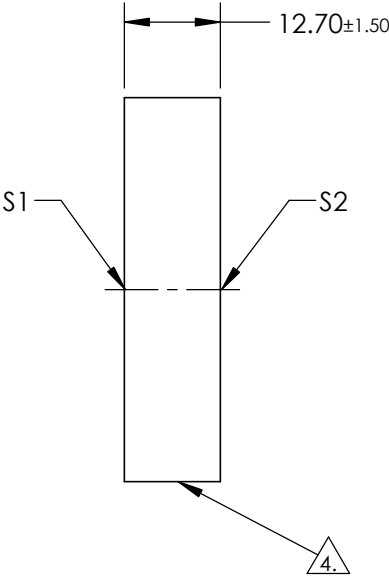
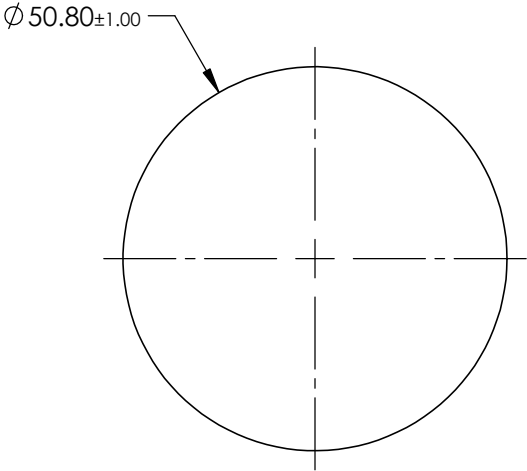


NOTES:

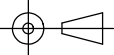

- 1. SUBSTRATE:  
Fused Silica (Corning 7980)
- 2. SURFACE S2 TO BE PARALLEL WITH S1 TO <30 arcsec
- 3. COATING (APPLY ACROSS CLEAR APERTURE)  
S1 & S2: NONE
- 4. FINE GRIND SURFACE
- 5. RoHS COMPLIANT



**FOR INFORMATION ONLY:  
DO NOT MANUFACTURE  
PARTS TO THIS DRAWING**

SPECIFICATIONS SUBJECT TO CHANGE WITHOUT NOTICE  
DIMENSIONS ARE FOR REFERENCE ONLY

	S1	S2
SHAPE	PLANO	PLANO
SURFACE FLATNESS	$\lambda/20$	$\lambda/20$
SURFACE QUALITY	60-40	60-40
CLEAR APERTURE	$\phi 45.72$	$\phi 45.72$
BEVEL	PROTECTED AS NEEDED	PROTECTED AS NEEDED

THIRD ANGLE PROJECTION 		 Edmund Optics®	
TITLE		2" Dia. $\lambda/20$ Fused Silica Dual Surface Flat	
ALL DIMS IN	mm	DWG NO	48130
			SHEET 1 OF 1