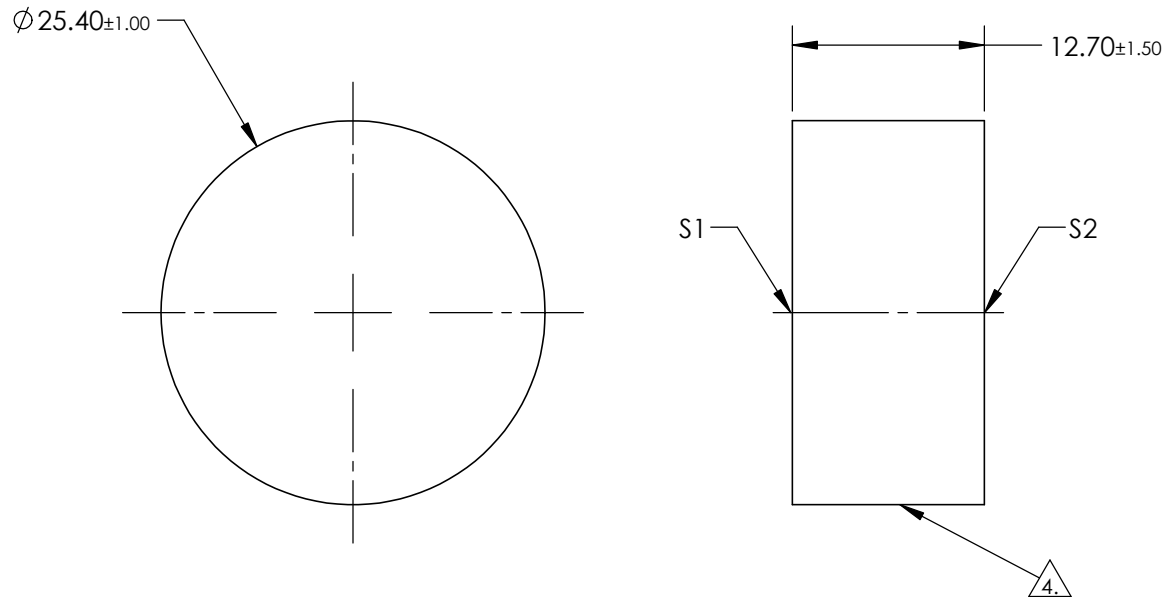


NOTES:

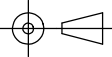

1. SUBSTRATE:
Fused Silica (Corning 7980)
2. SURFACE S2 TO BE PARALLEL WITH S1 TO <30 arcsec
3. COATING (APPLY ACROSS CLEAR APERTURE)
S1 & S2: NONE
4. FINE GRIND SURFACE
5. RoHS COMPLIANT



**FOR INFORMATION ONLY:
DO NOT MANUFACTURE
PARTS TO THIS DRAWING**

SPECIFICATIONS SUBJECT TO CHANGE WITHOUT NOTICE
DIMENSIONS ARE FOR REFERENCE ONLY

| | S1 | S2 |
|------------------|---------------------|---------------------|
| SHAPE | PLANO | PLANO |
| SURFACE FLATNESS | $\lambda/20$ | $\lambda/20$ |
| SURFACE QUALITY | 60-40 | 60-40 |
| CLEAR APERTURE | $\phi 22.86$ | $\phi 22.86$ |
| BEVEL | PROTECTED AS NEEDED | PROTECTED AS NEEDED |

| | | | |
|--|----|--|-----------------|
| THIRD ANGLE PROJECTION  | |  Edmund Optics® | |
| TITLE | | 1" Dia. $\lambda/20$ Fused Silica Dual Surface Flat | |
| ALL DIMS IN | mm | DWG NO | 48129 |
| | | | SHEET 1 OF 1 |