

NOTES:

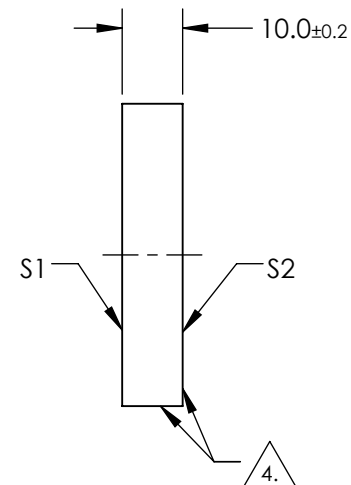
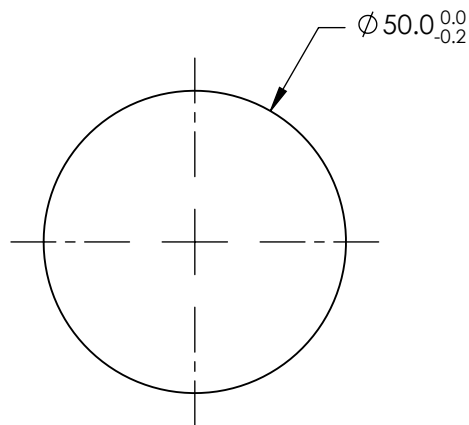
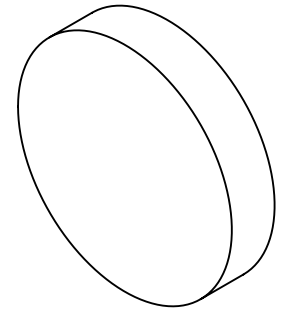
- 1. SUBSTRATE: FUSED SILICA
- 2. SURFACE S2 TO BE PARALLEL WITH SURFACE S1 TO WITHIN 3 arcmin
- 3. COATING SPECIFICATIONS APPLY ACROSS COATING APERTURE
 - S1: R(abs) >99.8% @ 635/670nm
 - R(avg) >98% @ 600 - 700nm
 - S2: UNCOATED

4. S2 & EDGES: FINE GRIND SURFACE

4. POWER, IRREGULARITY, AND SURFACE QUALITY SPECIFICATIONS
APPLY ACROSS CLEAR APERTURE

5. ROHS COMPLIANT

**FOR INFORMATION ONLY:
DO NOT MANUFACTURE
PARTS TO THIS DRAWING**



SPECIFICATIONS SUBJECT TO CHANGE WITHOUT NOTICE
DIMENSIONS ARE FOR REFERENCE ONLY

	S1	S2
SHAPE	PLANO	PLANO
SURFACE QUALITY	10-5	N/A
SURFACE FLATNESS	$\lambda/10$	N/A
COATING	DIELECTRIC	N/A
BEVEL	PROTECTIVE AS NEEDED	PROTECTIVE AS NEEDED

THIRD ANGLE PROJECTION	
ALL DIMS IN	mm

TITLE	50.0mm Dia 635nm/670nm 45°, Laser Diode Mirror
DWG NO	47159
SHEET 1 OF 1	