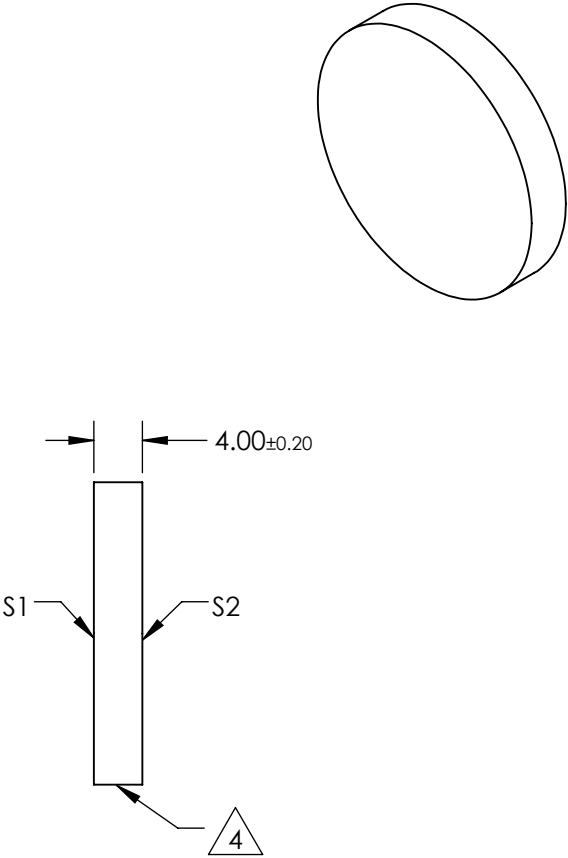
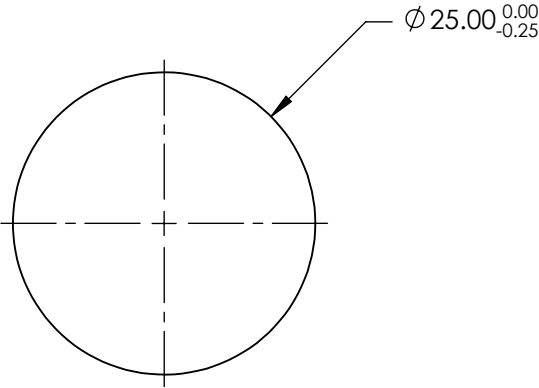


NOTES:

- 1. SUBSTRATE:
N-BK7
- 2. S2 TO BE PARALLEL WITH S1 TO <1 ARCMIN
- 3. COATING (APPLY ACROSS CLEAR APERTURE)
S1 & S2: RABS ≤0.25% @ 880nm
RAVG ≤1.25% @ 400 - 870nm
RAVG ≤1.25% @ 890 - 1000nm

4. FINE GRIND SURFACE

- 5. RoHS COMPLIANT
- 6. SURFACE FLATNESS (P-V):
λ/4 (per inch over clear aperture)



**FOR INFORMATION ONLY:
DO NOT MANUFACTURE
PARTS TO THIS DRAWING**

SPECIFICATIONS SUBJECT TO CHANGE WITHOUT NOTICE
DIMENSIONS ARE FOR REFERENCE ONLY

Edmund Optics®

	S1	S2
SHAPE	PLANO	PLANO
SURFACE QUALITY	60-40	60-40
CLEAR APERTURE	Ø22.50	Ø22.50
BEVEL	PROTECTIVE AS NEEDED	PROTECTIVE AS NEEDED



ALL DIMS IN mm

TITLE

25mm DIA., 4mm THICK, VIS-NIR COATED
λ/4 N-BK7 WINDOW

DWG NO

45661

SHEET
1 OF 1