

NOTES:

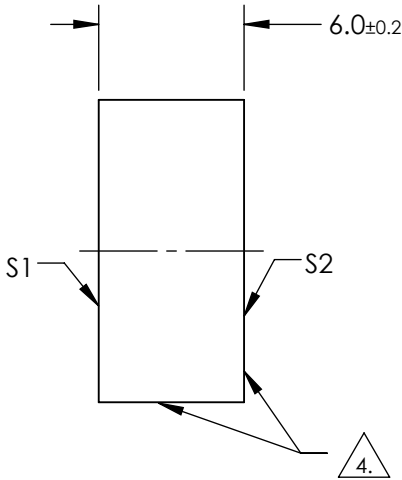
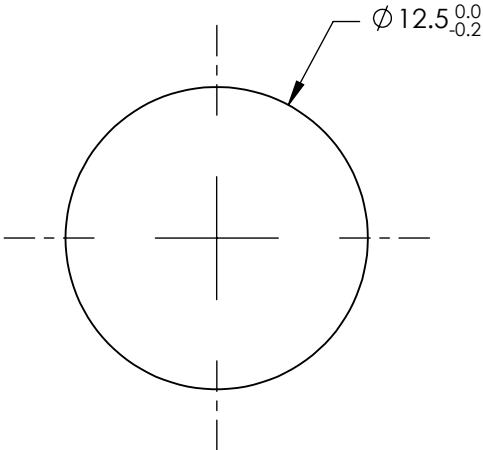
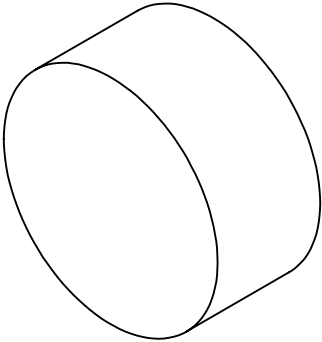
- 1. SUBSTRATE: FUSED SILICA
- 2. SURFACE S2 TO BE PARALLEL WITH SURFACE S1 TO WITHIN <3 arcmin
- 3. COATING SPECIFICATIONS APPLY ACROSS COATING APERTURE
 - S1: R(avg) ≥78% @ 120 - 125nm
 - R(avg) ≥88% @ 120 - 600nm
 - S2: UNCOATED

4. S2 & EDGES: FINE GRIND SURFACE

5. POWER, IRREGULARITY, AND SURFACE QUALITY SPECIFICATIONS
APPLY ACROSS CLEAR APERTURE

6. ROHS COMPLIANT

**FOR INFORMATION ONLY:
DO NOT MANUFACTURE
PARTS TO THIS DRAWING**




SPECIFICATIONS SUBJECT TO CHANGE WITHOUT NOTICE
DIMENSIONS ARE FOR REFERENCE ONLY

	S1	S2
SHAPE	PLANO	PLANO
SURFACE QUALITY	10-5	N/A
SURFACE FLATNESS	λ/10	N/A
COATING TYPE	METAL	N/A
COATING	VUV ENHANCED ALUMINUM	N/A
BEVEL	PROTECTIVE AS NEEDED	PROTECTIVE AS NEEDED

THIRD ANGLE
PROJECTION

ALL DIMS IN mm

 **Edmund Optics®**

TITLE	12.5mm Dia., Vacuum UV (VUV) Mirror		
DWG NO	33912	SHEET 1 OF 1	