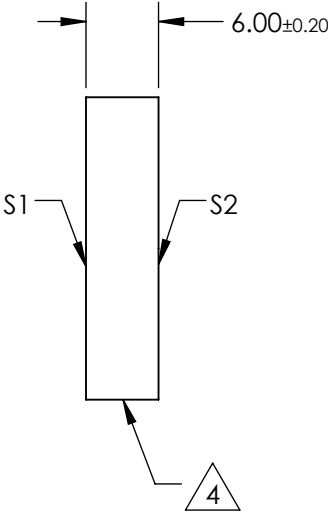
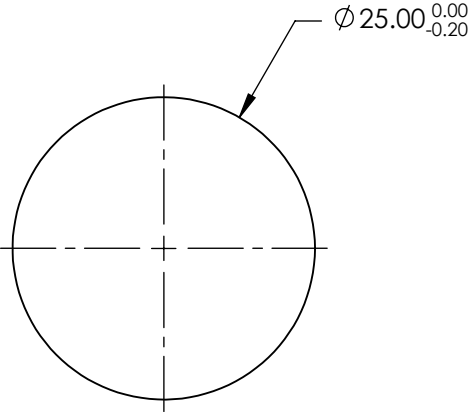


NOTES:

1. SUBSTRATE
- FUSED SILICA
2. SURFACE S2 TO BE PARALLEL WITH S1 WITHIN < 3 ARCMIN
3. COATING (APPLY ACROSS CLEAR APERTURE)
- S1: Laser Mirror (266nm)
- R(ABS) >99.5% @ 266nm @ 45° AOI
- R(AVG) >99.5% @ 263 - 268nm @ 45° AOI
- DAMAGE THRESHOLD,
- PULSED: 2.5 J/cm² @ 266nm, 20ns, 20Hz
- CW: 1MW/cm² @ 266nm
- S2: NONE

4. FINE GROUND SURFACE
5. POWER, IRREGULARITY, SURFACE QUALITY, AND COATING SPECIFICATIONS APPLY ACROSS CLEAR APERTURE
6. RoHS COMPLIANT

FOR INFORMATION ONLY:  
DO NOT MANUFACTURE  
PARTS TO THIS DRAWING



SPECIFICATIONS SUBJECT TO CHANGE WITHOUT NOTICE  
DIMENSIONS ARE FOR REFERENCE ONLY

	S1	S2	<div><div><div></div></div><div>Edmund Optics®</div></div>			
SHAPE	PLANO	PLANO				
SURFACE FLATNESS	λ/10	N/A	<div>THIRD ANGLE PROJECTION</div> <div></div>	TITLE	Ø25mm, 266nm, 45°, ND:YAG LASER LINE MIRROR	
SURFACE QUALITY	10-5	FINE GROUND				
CLEAR APERTURE	Ø22.5	N/A				
BEVEL	PROTECTIVE AS NEEDED	PROTECTIVE AS NEEDED				
			ALL DIMS IN	mm	DWG NO	47981
			SHEET 1 OF 1			