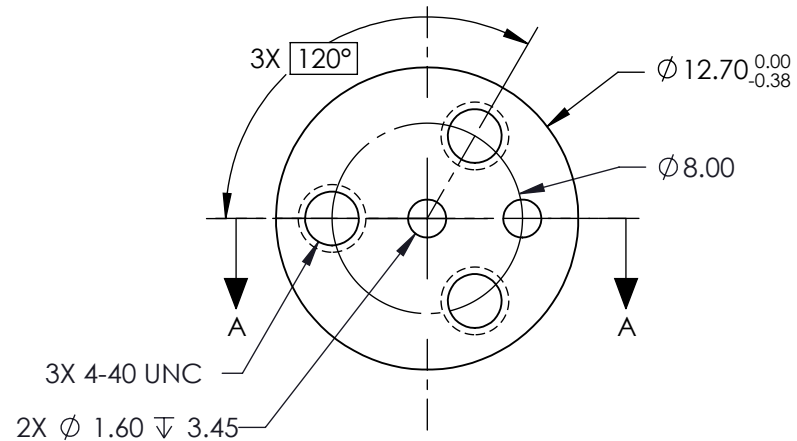
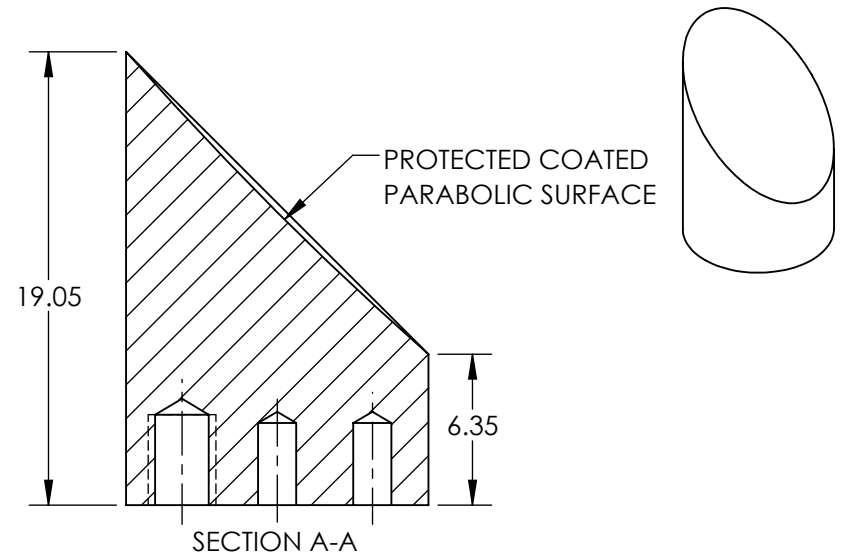
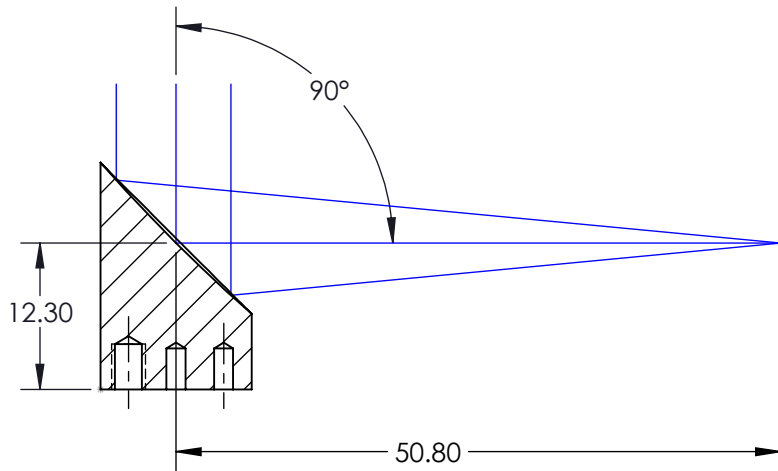


NOTES:

1. ALLOWABLE OPTICAL MATERIAL:  
ALUMINUM
2. FINISH (EXCEPT SURFACE S1):  
BLACK ANODIZED
3. COATING (APPLY ACROSS COATING APERTURE)  
S1: PROTECTED ALUMINUM  
R(AVG) >85% from 0.4-0.7 $\mu$ m  
R(AVG) >97% from 2 - 12 $\mu$ m

SURFACE ROUGHNESS: <175 Å RMS

4. FOCAL LENGTH TOLERANCE:  $\pm 1\%$
5. RoHS COMPLIANT



SPECIFICATIONS SUBJECT TO CHANGE WITHOUT NOTICE  
DIMENSIONS ARE FOR REFERENCE ONLY

REV. A	S1
SHAPE	PARABOLIC
REFLECTIVE WAVEFRONT DISTORTION AT 632.8nm (RMS)	$\lambda/4$
SURFACE FIGURE AT 632.8nm (RMS)	$\lambda/8$
CLEAR APERTURE	90%
BEVEL	PROTECTIVE AS NEEDED



ALL DIMS IN

mm



**Edmund Optics®**

TITLE

Ø12.7 x 50.8mm EFL 90° OAP PROTECTED  
ALUMINUM MIRROR 175Å

DWG NO

34564

SHEET  
1 OF 1