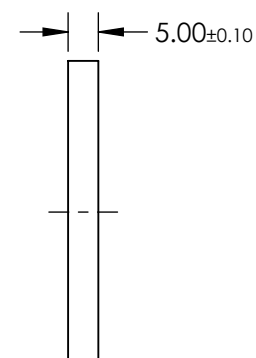
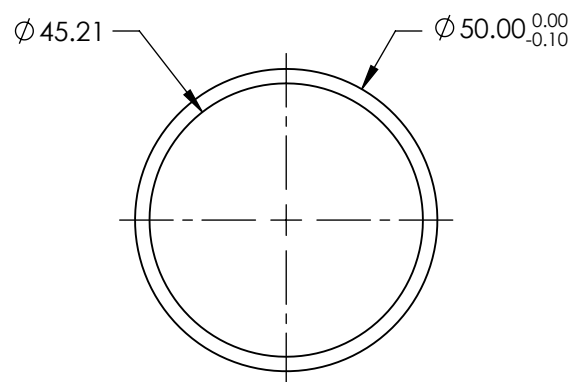
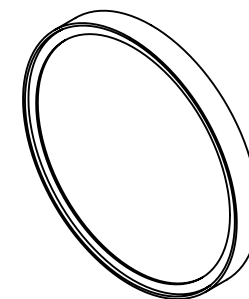


NOTES:

1. CONSTRUCTION: MOUNTED IN BLACK ANODIZED RING
2. COATING (APPLY ACROSS COATING APERTURE)

DURABILITY: MIL-C-48497A  
PERFORMANCE SPECIFICATIONS:  
CWL: 830  
FWHM: 42  
REFLECTION %: >99  
TRANSMISSION %: >90


3. POWER, IRREGULARITY, AND SURFACE QUALITY SPECIFICATIONS APPLY ACROSS CLEAR APERTURE
4. TRANSMITTED WAVEFRONT DISTORTION RMS@  $<1\lambda$
5. ROHS COMPLIANT



**FOR INFORMATION ONLY:  
DO NOT MANUFACTURE  
PARTS TO THIS DRAWING**

SPECIFICATIONS SUBJECT TO CHANGE WITHOUT NOTICE  
DIMENSIONS ARE FOR REFERENCE ONLY



	S1	S2	THIRD ANGLE PROJECTION 		TITLE	OD4, Ø50mm, 830nm, NOTCH FILTER	
SHAPE	PLANO	PLANO			TITLE		
SURFACE QUALITY	60-40	60-40			TITLE		
CLEAR APERTURE	Ø45.21	Ø45.21	ALL DIMS IN	mm	DWG NO	86705	SHEET 1 OF 1