

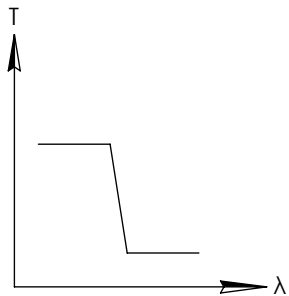
NOTES:

1. SUBSTRATE
2. SURFACE S2 TO BE PARALLEL WITH SURFACE S1 TO WITHIN 5 arcsec
3. COATING (APPLY ACROSS COATING APERTURE)
ENVIRONMENTAL DURABILITY:
PHYSICAL DURABILITY:
PERFORMANCE SPECIFICATIONS:
T(avg):>85% FROM 572 - 1056 nm FOR RANDOM POLARIZATION @ 45° AOI
T(abs): >80% FROM 572 - 1056 nm FOR ALL POLARIZATION @ 45° AOI
R(avg):>97% FROM 1155 - 1430 nm FOR RANDOM POLARIZATION @ 45° AOI
R(abs): >95% FROM 1155 - 1430 nm FOR ALL POLARIZATION @ 45° AOI
T(abs): = 50% 1100nm @ 45° AOI

S1: HARD COATED
S2: SINGLE LAYER MgF2

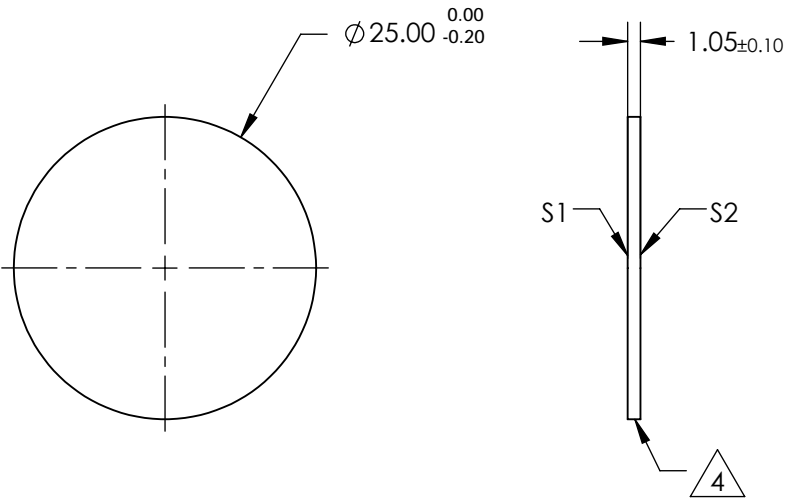
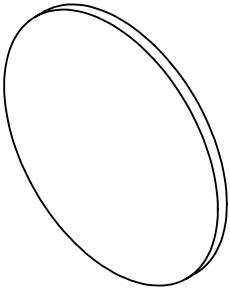
4. FINE GRIND SURFACE

5. POWER, IRREGULARITY, AND SURFACE QUALITY SPECIFICATIONS
APPLY ACROSS CLEAR APERTURE
6. TRANSMITTED WAVEFRONT DISTORTION RMS@ 632.8nm $\leq \frac{1}{4} \lambda$
7. ROHS COMPLIANT



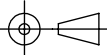

SHORTPASS FILTER

**FOR INFORMATION ONLY:
DO NOT MANUFACTURE
PARTS TO THIS DRAWING**



SPECIFICATIONS SUBJECT TO CHANGE WITHOUT NOTICE
DIMENSIONS ARE FOR REFERENCE ONLY

	S1	S2
SHAPE	PLANO	PLANO
SURFACE QUALITY	60-40	60-40
CLEAR APERTURE	Ø22.00	Ø22.00
BEVEL	PROTECTIVE AS NEEDED	PROTECTIVE AS NEEDED

THIRD ANGLE PROJECTION 			
TITLE		1100nm, 25mm DIAMETER, DICHROIC SHORTPASS	
ALL DIMS IN	mm	DWG NO	86691
			SHEET 1 OF 1