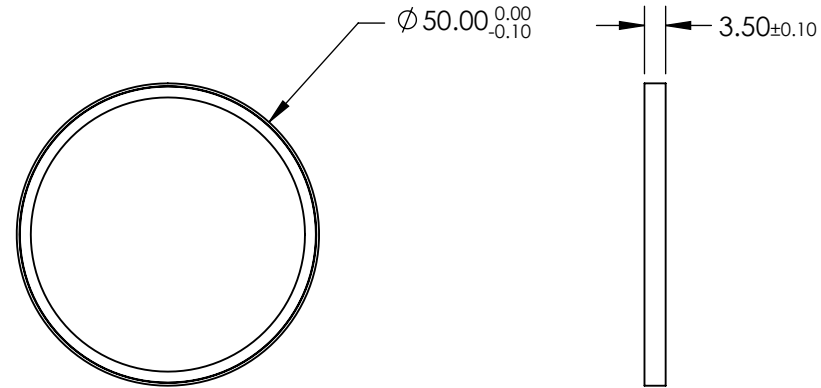
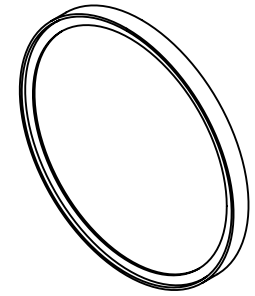


NOTES:

1. SUBSTRATE
2. SURFACE S2 TO BE PARALLEL WITH SURFACE S1 TO WITHIN 10 ARCSEC
3. COATING (APPLY ACROSS CLEAR APERTURE)
 PHYSICAL DURABILITY: MIL-C-48497A
 ENVIRONMENTAL DURABILITY: MIL-STD-810F
 Tabs $\geq 93\%$ @ 804 - 900nm
4. FINE GROUND SURFACE
5. POWER, IRREGULARITY, AND SURFACE QUALITY SPECIFICATIONS APPLY
 ACROSS CLEAR APERTURE
6. TRANSMITTED WAVEFRONT DISTORTION RMS @ $< \lambda/4$ @ 633nm
7. RoHS COMPLIANT

FOR INFORMATION ONLY:
DO NOT MANUFACTURE
PARTS TO THIS DRAWING



SPECIFICATIONS SUBJECT TO CHANGE WITHOUT NOTICE
 DIMENSIONS ARE FOR REFERENCE ONLY

EO® Edmund Optics®

REV. A	S1	S2
SHAPE	PLANO	PLANO
SURFACE QUALITY	60-40	60-40
CLEAR APERTURE	Ø40	Ø40
BEVEL	PROTECTIVE AS NEEDED	PROTECTIVE AS NEEDED

THIRD ANGLE PROJECTION

ALL DIMS IN mm

TITLE	Ø50mm, 792.8nm, RAMAN EDGE FILTER
DWG NO	86262
SHEET	1 OF 1