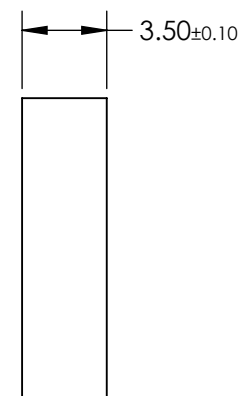
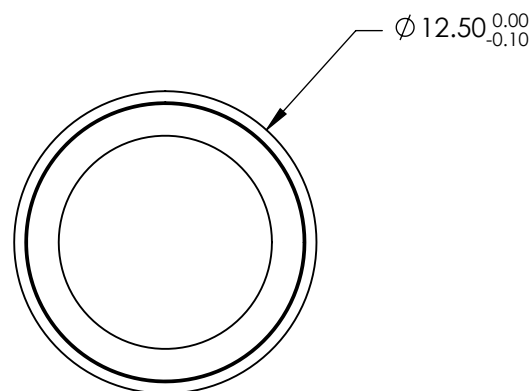
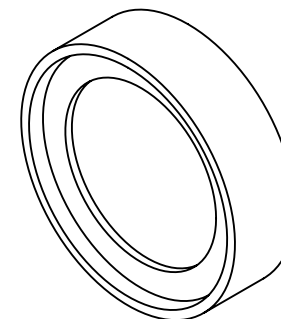


NOTES:

**FOR INFORMATION ONLY:
DO NOT MANUFACTURE
PARTS TO THIS DRAWING**

1. SUBSTRATE
2. SURFACE S2 TO BE PARALLEL WITH SURFACE S1 TO WITHIN 10 ARCSEC
3. COATING (APPLY ACROSS CLEAR APERTURE)
PHYSICAL DURABILITY: MIL-C-48497A
ENVIRONMENTAL DURABILITY: MIL-STD-810F
Tavg ≥93% @ 1077.8 - 2000nm
4. FINE GROUND SURFACE
5. POWER, IRREGULARITY, AND SURFACE QUALITY SPECIFICATIONS APPLY
ACROSS CLEAR APERTURE
6. TRANSMITTED WAVEFRONT DISTORTION RMS @ <λ/4 @ 633nm
7. RoHS COMPLIANT



SPECIFICATIONS SUBJECT TO CHANGE WITHOUT NOTICE
DIMENSIONS ARE FOR REFERENCE ONLY

REV. A	S1	S2
SHAPE	PLANO	PLANO
REJECTION WAVELENGTH	831 - 1064	831 - 1064
SURFACE QUALITY	60-40	60-40
CLEAR APERTURE	Ø10	Ø10
BEVEL	PROTECTIVE AS NEEDED	PROTECTIVE AS NEEDED



ALL DIMS IN mm

EO[®] Edmund Optics[®]

TITLE

Ø12.5mm, 1074.6nm, RAMAN EDGE FILTER

DWG NO

86232

SHEET
1 OF 1