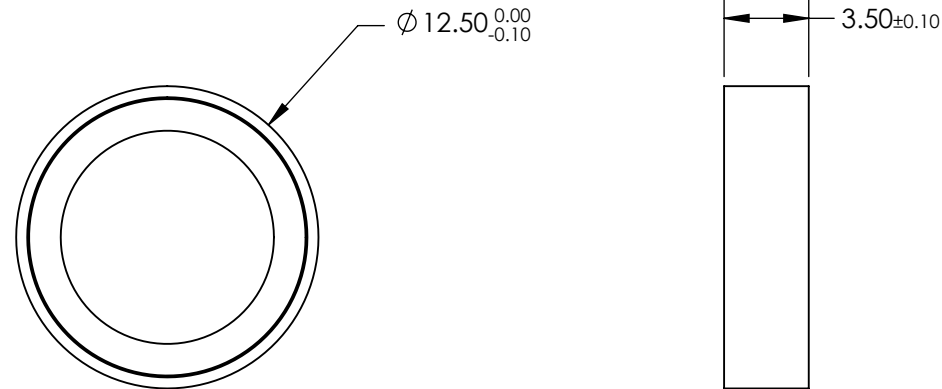
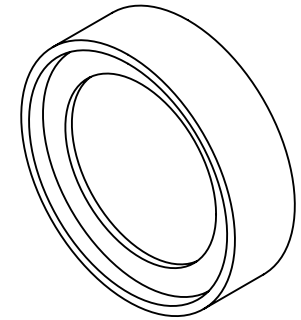


NOTES:

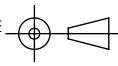
1. SUBSTRATE
2. SURFACE S2 TO BE PARALLEL WITH SURFACE S1 TO WITHIN 10 ARCSEC
3. COATING (APPLY ACROSS CLEAR APERTURE)
 PHYSICAL DURABILITY: MIL-C-48497A
 ENVIRONMENTAL DURABILITY: MIL-STD-810F
 Tavg ≥93% @ 538.9 - 1200nm
4. FINE GROUND SURFACE
5. POWER, IRREGULARITY, AND SURFACE QUALITY SPECIFICATIONS APPLY
 ACROSS CLEAR APERTURE
6. TRANSMITTED WAVEFRONT DISTORTION RMS @ $\lambda/4$ @ 633nm
7. RoHS COMPLIANT

FOR INFORMATION ONLY:
DO NOT MANUFACTURE
PARTS TO THIS DRAWING




SPECIFICATIONS SUBJECT TO CHANGE WITHOUT NOTICE
 DIMENSIONS ARE FOR REFERENCE ONLY

REV. A	S1	S2
SHAPE	PLANO	PLANO
REJECTION WAVELENGTH	430 - 532	430 - 532
SURFACE QUALITY	60-40	60-40
CLEAR APERTURE	$\varnothing 10$	$\varnothing 10$
BEVEL	PROTECTIVE AS NEEDED	PROTECTIVE AS NEEDED

THIRD ANGLE PROJECTION 

ALL DIMS IN mm

 **Edmund Optics®**

TITLE: $\varnothing 12.5\text{mm}$, 537.3nm, RAMAN EDGE FILTER

DWG NO: 86225

SHEET 1 OF 1