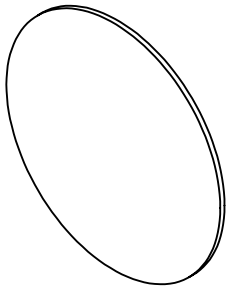


NOTES:

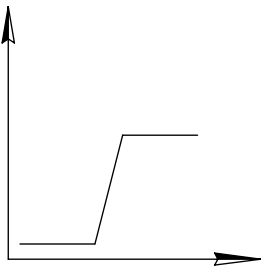
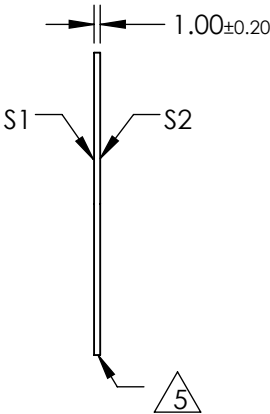
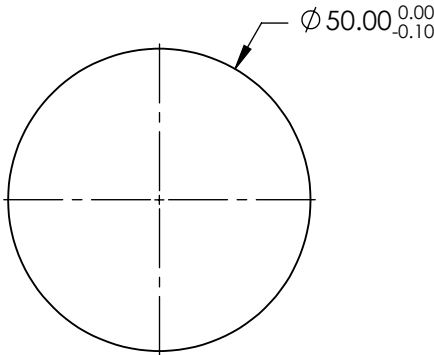
**FOR INFORMATION ONLY:  
DO NOT MANUFACTURE  
PARTS TO THIS DRAWING**



- 1. SUBSTRATE:  
SILICON (SI)
- 2. SURFACE S2 TO BE PARALLEL TO SURFACE S1 TO WITHIN <10 arcmin
- 3. TRANSMISSION (%): >85%
- 4. CUT-ON WAVELENGTH: 1.05.0µm

 FINE GRIND SURFACE


- 6. POWER, IRREGULARITY, AND SURFACE QUALITY SPECIFICATION APPLY  
ACROSS CLEAR APERTURE
- 7. RoHS: COMPLIANT

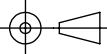


LONGPASS FILTER

SPECIFICATIONS SUBJECT TO CHANGE WITHOUT NOTICE  
DIMENSIONS ARE FOR REFERENCE ONLY

Rev. A	S1	S2
SHAPE	PLANO	PLANO
SURFACE QUALITY	80-50	80-50
COATING APERTURE	Ø45	Ø45
SURFACE FLATNESS	3 - 5λ	3 - 5λ
BEVEL	PROTECTIVE AS NEEDED	PROTECTIVE AS NEEDED



THIRD ANGLE PROJECTION 		TITLE	Ø50mm, 1.05µm, INFRARED LONGPASS FILTER	
ALL DIMS IN	mm	DWG NO	68657	SHEET 1 OF 1