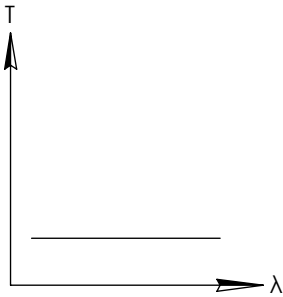
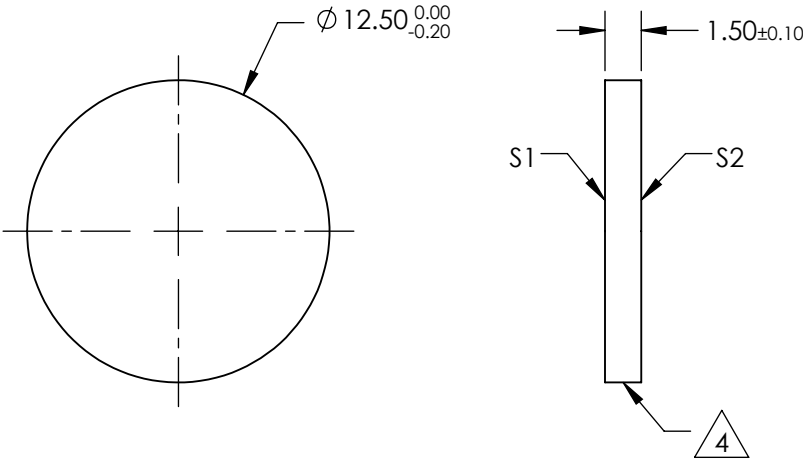
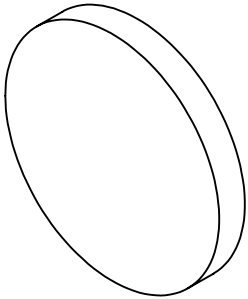


NOTES:


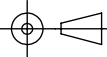
- 1. SUBSTRATE
- 2. SURFACE S2 TO BE PARALLEL WITH SURFACE S1 TO WITHIN 5 arcsec
- 3. COATING (APPLY ACROSS COATING APERTURE)  
OPTICAL DENSITY =  $1 \pm 10\%$  FROM 250 - 700  
S1: PROPRIETARY N.D.  
S2: NONE
- 4. FINE GRIND SURFACE
- 5. POWER, IRREGULARITY, AND SURFACE QUALITY SPECIFICATIONS  
APPLY ACROSS CLEAR APERTURE
- 6. TRANSMITTED WAVEFRONT DISTORTION P-V @ 632.8nm:  $\leq \lambda/4$
- 7. ROHS COMPLIANT

FOR INFORMATION ONLY:  
DO NOT MANUFACTURE  
PARTS TO THIS DRAWING



UV-VIS NEUTRAL DENSITY FILTER

SPECIFICATIONS SUBJECT TO CHANGE WITHOUT NOTICE  
DIMENSIONS ARE FOR REFERENCE ONLY

	S1	S2	 Edmund Optics®			
SHAPE	PLANO	PLANO		TITLE	OD 1, Ø12.5mm, UV-VIS ND FILTER	
SURFACE QUALITY	40-20	40-20		DWG NO	48620	
CLEAR APERTURE	Ø10	Ø10				
COATING APERTURE	Ø10	Ø10				
BEVEL	PROTECTIVE AS NEEDED	PROTECTIVE AS NEEDED	ALL DIMS IN	mm		
					SHEET	1 OF 1