

NOTES:

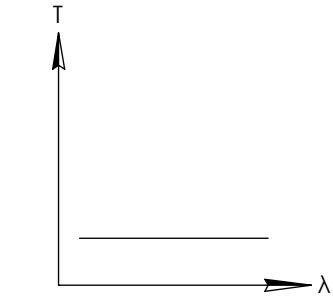
1. SUBSTRATE
2. SURFACE S2 TO BE PARALLEL WITH SURFACE S1 TO WITHIN 5 arcsec
3. COATING (APPLY ACROSS COATING APERTURE)  
OPTICAL DENSITY =  $2 \pm 10\%$  FROM 190 - 1700  
S1: COATED  
S2: COATED
4. FINE GRIND SURFACE
5. POWER, IRREGULARITY, AND SURFACE QUALITY SPECIFICATIONS  
APPLY ACROSS CLEAR APERTURE
6. TRANSMITTED WAVEFRONT DISTORTION P-V @ 632.8nm:  $\leq \lambda/4$
7. ROHS COMPLIANT

4. FINE GRIND SURFACE

5. POWER, IRREGULARITY, AND SURFACE QUALITY SPECIFICATIONS  
APPLY ACROSS CLEAR APERTURE

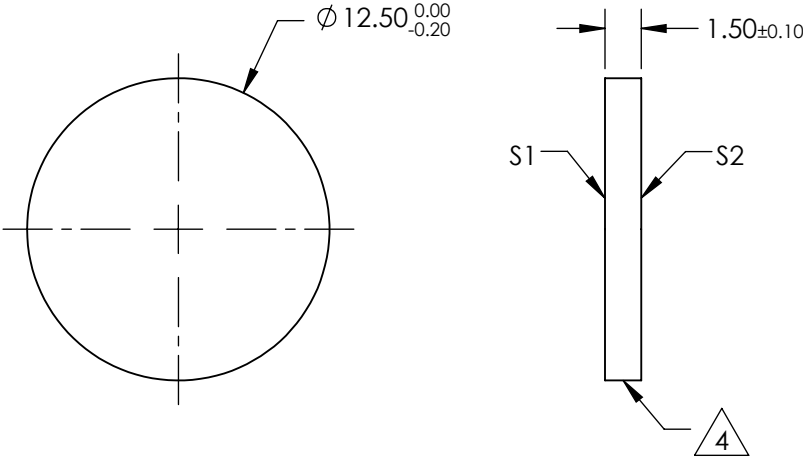
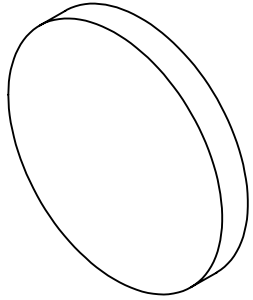
6. TRANSMITTED WAVEFRONT DISTORTION P-V @ 632.8nm:  $\leq \lambda/4$

7. ROHS COMPLIANT


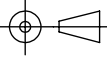


UV-VIS NEUTRAL DENSITY FILTER

**FOR INFORMATION ONLY:  
DO NOT MANUFACTURE  
PARTS TO THIS DRAWING**



SPECIFICATIONS SUBJECT TO CHANGE WITHOUT NOTICE  
DIMENSIONS ARE FOR REFERENCE ONLY

	S1	S2	 Edmund Optics®			
SHAPE	PLANO	PLANO		TITLE	OD 2, $\varnothing 12.5$ mm, UV-VIS ND FILTER	
SURFACE QUALITY	40-20	40-20		DWG NO	88269	
CLEAR APERTURE	$\varnothing 10$	$\varnothing 10$				
COATING APERTURE	$\varnothing 10$	$\varnothing 10$				
BEVEL	PROTECTIVE AS NEEDED	PROTECTIVE AS NEEDED	ALL DIMS IN	mm	SHEET 1 OF 1	