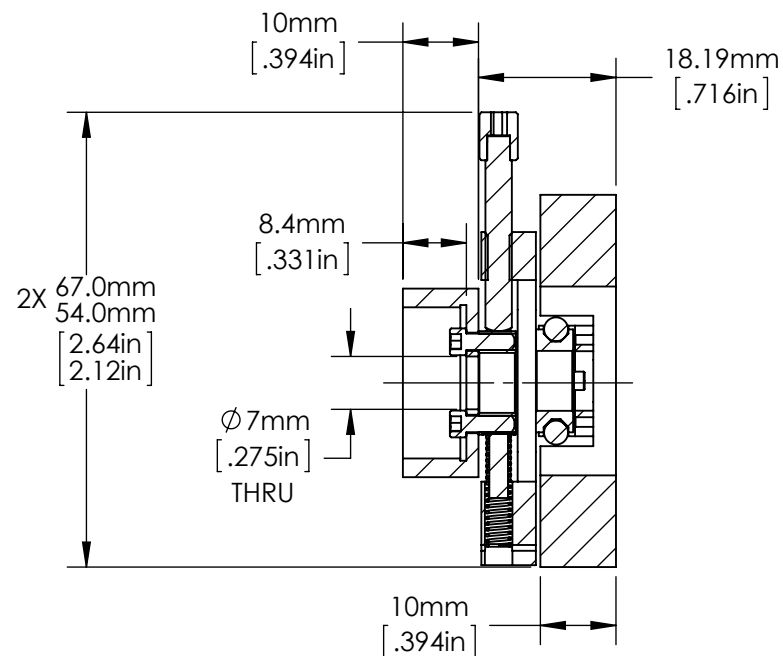
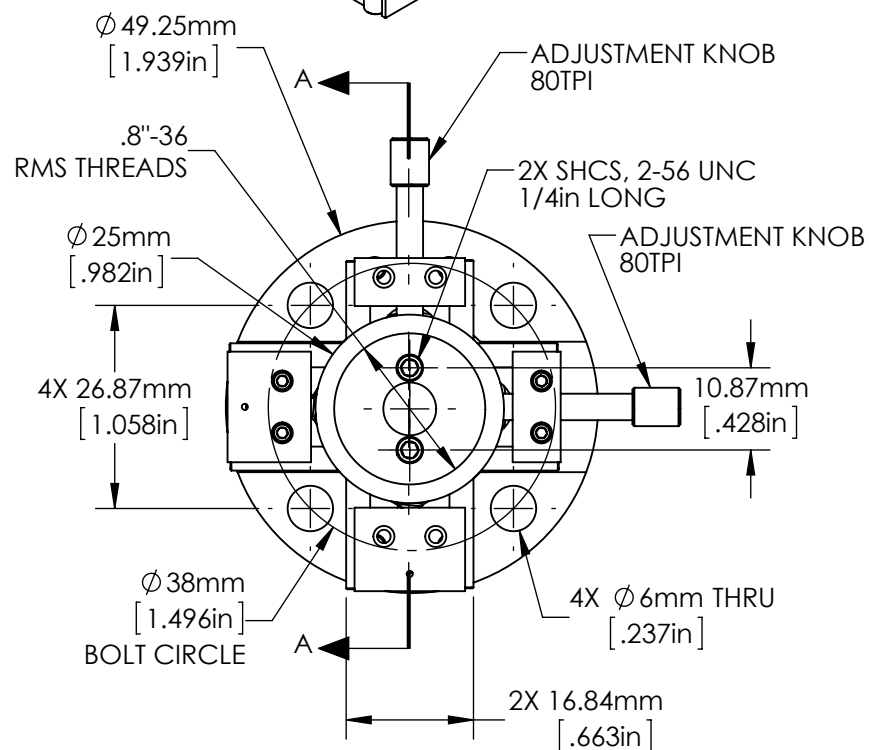


SPECIFICATIONS SUBJECT TO CHANGE WITHOUT NOTICE
DIMENSIONS ARE FOR REFERENCE ONLY
DIMENSIONS ARE IN mm [INCHES]



SECTION A-A

NOTES:

1. INCLUDES 1 PACKAGE OF (5) M3 x 2.5mm LONG, FLAT POINT SET SCREWS TO SECURE SEPARATELY PURCHASED RODS IN THE Ø6 HOLES. ORDER ADDITIONAL PACKAGES USING SN 85422.
2. TRANSLATION: APPROXIMATELY 0.5in TOTAL TRAVEL IN THE X AND Y DIRECTIONS.

Edmund Optics®

TITLE	XY Micro Positioning Stage Plate with RMS Thread					
DWG NO	85722	MATERIAL	BLACK ANODIZED ALUMINUM	SHEET 1 OF 1	REV	000

Enable 3D View