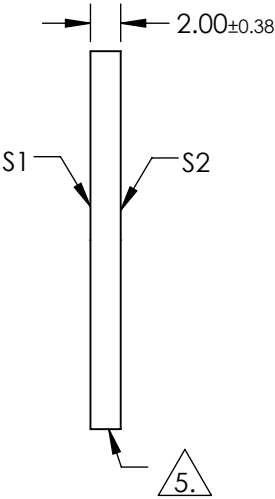
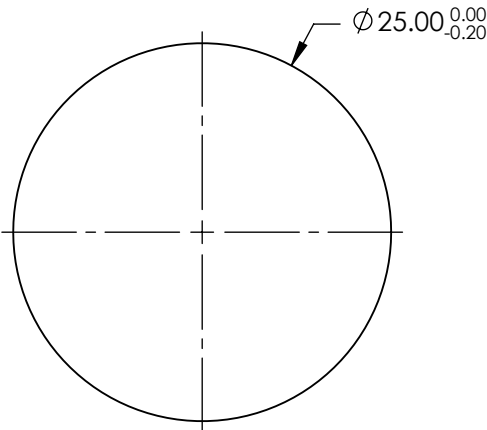


NOTES:

- 1. SUBSTRATE: FUSED SILICA
- 2. RoHS: COMPLIANT
- 3. SURFACE S2 TO BE PARALLEL TO SURFACE S1 TO WITHIN < 5 ARCMIN
- 4. COATING (APPLY ACROSS COATING APERTURE)  
S1 & S2: R(ABS) ≤1.0% FROM 350 - 450nm  
R(AVG) ≤1.5% FROM 250 - 700nm

5. FINE GRIND SURFACE



**FOR INFORMATION ONLY:  
DO NOT MANUFACTURE  
PARTS TO THIS DRAWING**

SPECIFICATIONS SUBJECT TO CHANGE WITHOUT NOTICE  
DIMENSIONS ARE FOR REFERENCE ONLY

|                  | S1                   | S2                   |
|------------------|----------------------|----------------------|
| SHAPE            | PLANO                | PLANO                |
| SURFACE ACCURACY | 1λ                   | 1λ                   |
| SURFACE QUALITY  | 60-40                | 60-40                |
| CLEAR APERTURE   | Ø22.50               | Ø22.50               |
| BEVEL            | PROTECTIVE AS NEEDED | PROTECTIVE AS NEEDED |

THIRD ANGLE  
PROJECTION

TITLE

25mm DIA. UV - VIS COATED, 1λ FUSED SILICA WINDOW

DWG NO

84475

SHEET

1 OF 1